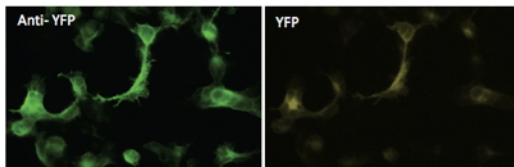
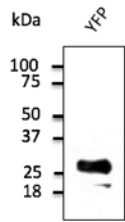
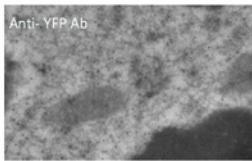


## YFP Polyclonal Antibody

<b>Catalogue No*:</b>	AB1166-100	<b>Price/Unit*:</b>	320.00	
<b>Source:</b>	3	<b>Quantity/unit size*:</b>	300 g	
<b>Description:</b>	Goat polyclonal antibody to YFP (yellow fluorescent protein). YFP is a genetic mutant of green fluorescent protein (GFP), derived from <i>Aequorea victoria</i> . Its excitation/emission peaks are 514/527 nm respectively.  <b>Alternative names:</b> Yellow fluorescent protein antibody.			
<b>Immunogen:</b>	Purified recombinant GFP peptide from the jellyfish <i>Aequorea victoria</i> produced in <i>E. coli</i> .			
<b>Specificity:</b>	In 293HEK cells transfected with cds plasmid detects a band of 27 kDa by Western blot. This antibody also recognizes GFP and does not recognize mCherry/red fluorescent protein.			
<b>Reactivity:</b>	YFP, GFP, EGFP and Venus from <i>Aequorea victoria</i> .			
<b>Usage:</b>	Western blot 1:500-1:2,000 Immunofluorescence 1:50-1:1,000 Immunohistochemistry (paraffin) 1:50-1:1,000 Immunohistochemistry (frozen) 1:50-1:1,000			
<b>Reactivity Chart</b>				
<b>Sample</b>	<b>Western Blot</b>	<b>Immuno-fluorescence</b>	<b>Immuno-Histochemistry (p)</b>	<b>Immuno-Histochemistry (f)</b>
Transfected cells	+++	+++	+++	+++
<b>Storage:</b>	Store at -20 C for long-term storage. Store at 2-8 C for up to one month.			
<b>Special instructions:</b>	Avoid freeze/thaw cycles.			
<b>References:</b>	For research use only, not for diagnostic use			

**A****B****C**

**A** - Immunofluorescence – anti-YFP Ab in 293HEK cells transfected with YFP at 1/50 dilution; cells were fixed with 4% of PFA;

**B** – Anti-YFP Ab at 1/2,000 dilution; 293HEK cells transduced with YFP Ad; lysates at 50 µg per lane; rabbit polyclonal to goat IgG (HRP) at 1/10,000 dilution;

**C** - Immunogold labeling of epithelium cells, *in vivo* injected with YFP expressing vector;