



## Venus Polyclonal Antibody

<b>Catalogue No*:</b>	AB2166-100	<b>Price/Unit*:</b>	320.00
<b>Source:</b>	3	<b>Quantity/unit size*:</b>	300 g
<b>Description:</b>	Goat polyclonal antibody to Venus. Venus is a genetic mutant of green fluorescent protein (GFP), derived from <i>Aequorea victoria</i> . Its excitation/emission peaks are 515/528 nm respectively and is often used as a donor-acceptor pair by researchers in FRET based co-localization studies.  <b>Alternative names:</b> GFP, Green fluorescent protein antibody.		
<b>Immunogen:</b>	Purified recombinant GFP peptide from the jellyfish <i>Aequorea victoria</i> produced in <i>E. coli</i> .		
<b>Specificity:</b>	In 293HEK cells transfected with cds plasmid detects a band of 27 kDa by Western blot. This antibody also recognizes Venus/GFP and does not cross-react to mCherry/red fluorescent proteins.		
<b>Reactivity:</b>	Venus, GFP, EGFP and YFP from <i>Aequorea victoria</i> .		
<b>Usage:</b>	Western blot 1:500-1:2,000 Immunofluorescence 1:50-1:1,000 Immunohistochemistry (paraffin) 1:50-1:1,000 Immunohistochemistry (frozen) 1:50-1:1,000		

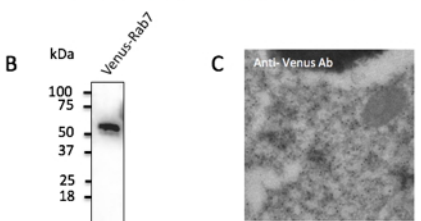
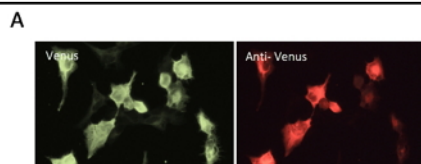
### Reactivity Chart

Sample	Western Blot	Immuno-fluorescence	Immuno-Histochemistry (p)	Immuno-Histochemistry (f)
transfected cells	+++	+++	+++	+++

**Storage:** Store at -20 C for long-term storage. Store at 2-8 C for up to one month.

**Special instructions:** Avoid freeze/thaw cycles.

**References:**  
  
For research use only, not for diagnostic use



**A** - Immunofluorescence - anti-Venus Ab in 293HEK cells transfected with Venus protein at 1/50 dilution; cells were fixed with 4% of PFA;  
**B** - Anti-Venus Ab at 1/2,000 dilution; 293HEK cells transfected with Venus-Rab7 Ad; lysates at 50 µg per lane; rabbit polyclonal to goat IgG (HRP) at 1/10,000 dilution;  
**C** - Immunogold labeling of epithelium cells, *in vivo* injected with Venus expressing vector;

