



## Ty1 Tag Polyclonal Antibody

<b>Catalogue No*:</b>	AB0133-100	<b>Price/Unit*:</b>	320.00
<b>Source:</b>	3	<b>Quantity/unit size*:</b>	100 g
<b>Description:</b>	Goat polyclonal antibody to Ty1 epitope tag. Ty1 epitope tag is useful for the labelling and detection of proteins by immunoprecipitation, immunostaining and immunoblotting techniques. Because of its small size, it is unlikely to affect the tagged protein's biochemical properties.  <b>Alternative names:</b> EVHTNQDPLD Tag antibody.		
<b>Immunogen:</b>	Purified recombinant peptide EVHTNQDPLD produced in <i>E. coli</i> .		
<b>Specificity:</b>	The antibody recognizes the Ty1-tag fused to the amino- or carboxy- termini of targeted proteins in transfected cells.		
<b>Reactivity:</b>	Ty1-tag fused to the amino- or carboxy- termini of proteins.		
<b>Usage:</b>	Western blot 1:500-1:5,000 Immunofluorescence ND Immunohistochemistry (paraffin) ND Immunohistochemistry (frozen) ND		

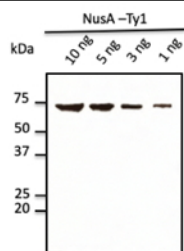
### Reactivity Chart

Sample	Western Blot	Immuno- fluorescence	Immuno-Histochemistry (p)	Immuno-Histochemistry (f)
recombinant protein	+++	ND	ND	ND

**Storage:** Store at -20 C for long-term storage. Store at 2-8 C for up to one month.

**Special instructions:** Avoid freeze/thaw cycles.

**References:**  
  
For research use only, not for diagnostic use



Anti-Ty1 tag Ab at 2,500 dilution;  
rabbit polyclonal to goat IgG  
(HRP) at 1/10,000 dilution;