



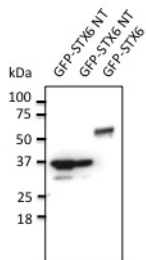
Syntaxin-6 Polyclonal Antibody

Catalogue No*:	AB0058-200	Price/Unit*:	300.00
Source:	3	Quantity/unit size*:	600 g
Description:	Goat polyclonal to Syntaxin-6 ? trans-Golgi and endosome marker. This trans-Golgi and endosome protein regulates membrane trafficking by partnering with a variety of other SNARE proteins. This protein is also involved in the regulation of neutrophil exocytosis, granule secretion and GLUT4 trafficking. Alternative names: Syn6 and STX6 antibody.		
Immunogen:	Recombinant peptide derived from within residues 100 aa to the N-terminus of human STX6 produced in <i>E. coli</i> .		
Specificity:	Detects STX6 by Western blot in transfected cells with GFP-STX6.		
Reactivity:	Reacts against human, rat, mouse, canine and monkey proteins.		
Usage:	Western blot 1:250-1:2,000 Immunofluorescence ND Immunohistochemistry (paraffin) ND Immunohistochemistry (frozen) ND		

Reactivity Chart

Sample	Western Blot	Immuno-fluorescence	Immuno-Histochemistry (p)	Immuno-Histochemistry (f)
human	+++	ND	ND	ND
rat	+++	ND	ND	ND
mouse	+++	ND	ND	ND
canine	+++	ND	ND	ND
monkey	+++	ND	ND	ND

Storage:	Store at -20 C for long-term storage. Store at 2-8 C for up to one month.
Special instructions:	Avoid freeze/thaw cycles.
References:	For research use only, not for diagnostic use



Anti-STX6 Ab at 1/500 dilution; lysates at 30 µg per lane; rabbit polyclonal to goat IgG (HRP) at 1/10,000 dilution;