



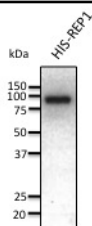
## REP1 Polyclonal Antibody

<b>Catalogue No*:</b>	AB0123-200	<b>Price/Unit*:</b>	320.00
<b>Source:</b>	3	<b>Quantity/unit size*:</b>	800 g
<b>Description:</b>	<p>REP1 is the component A of the RAB geranylgeranyl transferase holoenzyme. In the dimeric holoenzyme, this subunit binds unprenylated Rab GTPases and then presents them to the catalytic Rab GGTase subunit for the geranylgeranyl transfer reaction. Mutations in this protein are a cause of a type of retinal degeneration, called choroideremia.</p> <p><b>Alternative names:</b> CHM, choroideremia protein, DXS540, GGTA, HSD-32, RP1-93L7.1, rab escort protein 1, Rab geranylgeranyltransferase component A, REP-1, TCD antibody.</p>		
<b>Immunogen:</b>	Purified recombinant peptide derived from within residues 617 aa - stop at the C-terminus of human Rep1 produced in <i>E. coli</i> .		
<b>Specificity:</b>	Detects endogenous Rep1 and in transfected cells by Western blot.		
<b>Reactivity:</b>	Reacts against human, rat, mouse, canine and monkey proteins.		
<b>Usage:</b>	Western blot 1:500-1:2,000 Immunofluorescence ND Immunohistochemistry (paraffin) ND Immunohistochemistry (frozen) ND		

### Reactivity Chart

Sample	Western Blot	Immuno-fluorescence	Immuno-Histochemistry (p)	Immuno-Histochemistry (f)
human	+++	ND	ND	ND
rat	+++	ND	ND	ND
mouse	+++	ND	ND	ND
canine	+++	ND	ND	ND
monkey	+++	ND	ND	ND

<b>Storage:</b>	Store at -20 C for long-term storage. Store at 2-8 C for up to one month.
<b>Special instructions:</b>	Avoid freeze/thaw cycles.
<b>References:</b>	For research use only, not for diagnostic use



Anti-REP1 Ab at 1/1,000 dilution;  
50 ng of recombinant protein per  
lane; rabbit polyclonal to goat  
IgG (HRP) at 1/10,000 dilution.

