

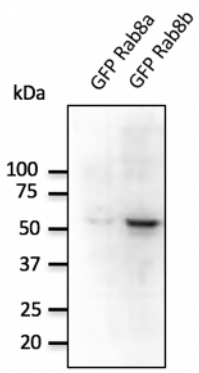
Rab8b Polyclonal Antibody

Catalogue No*:	AB0076-200	Price/Unit*:	320.00
Source:	3	Quantity/unit size*:	600 g
Description:	<p>Goat polyclonal antibody to mouse Rab8. Rab8 belongs to the small GTPase superfamily, Rab family. It has cell-type specific function during the process of exocytosis and coordinates regulation of the cytoskeleton. Rab8 also appears to interface with endocytic recycling circuits. At the molecular level, this GTPase regulates both the export of vesicles from the trans-Golgi apparatus, and the directed translocation along actin filaments and microtubules.</p> <p>Alternative names: RAB8A, RAB8B, RAS-associated protein RAB8A, ras-related protein Rab-8B, ras-related protein Rab-8A, ras-related protein Rab-8B antibody.</p>		
Immunogen:	Purified recombinant peptide derived from within residues 107 aa to the C-terminus of mouse Rab8b produced in <i>E. coli</i> .		
Specificity:	Detects Rab8b protein in transfected cells with GFP-Rab8b cds by Western blot. This Ab is specific for Rab8b. It does not recognize Rab8a.		
Reactivity:	Reacts against human, rat, mouse, canine and monkey proteins.		
Usage:	Western blot 1:250-1:1,000 Immunofluorescence ND Immunohistochemistry (paraffin) ND Immunohistochemistry (frozen) ND		

Reactivity Chart

Sample	Western Blot	Immuno-fluorescence	Immuno-Histochemistry (p)	Immuno-Histochemistry (f)
human	+++	ND	ND	ND
rat	+++	ND	ND	ND
mouse	+++	ND	ND	ND
canine	+++	ND	ND	ND
monkey	+++	ND	ND	ND

Storage:	Store at -20 C for long-term storage. Store at 2-8 C for up to one month.
Special instructions:	Avoid freeze/thaw cycles.
References:	For research use only, not for diagnostic use



Anti-Rab8b Ab at 1/500 dilution; lysates at 20 μ g per lane; rabbit polyclonal to goat IgG (HRP) at 1/10,000 dilution;