

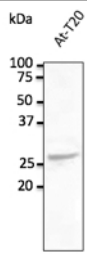
Rab5c Polyclonal Antibody

Catalogue No*:	AB0024-200	Price/Unit*:	320.00
Source:	3	Quantity/unit size*:	600 g
Description:	Goat polyclonal antibody to Rab5c. Rab5c belongs to the small GTPase superfamily, Rab family. Rab5c is an Early Endosome Marker and functions as a key regulator of vesicular trafficking during early endocytosis. Alternative names: L1880, RAB5C, RAS-associated protein RAB5C, ras-related protein Rab-5C, Rab5L antibody.		
Immunogen:	Purified recombinant peptide derived from within residues 118 aa to the C-terminus of mouse Rab5c produced in <i>E. coli</i> .		
Specificity:	Detects Rab5c by Western blot in the following human, rat and mouse whole cell lysates and transfected cells with GFP-Rab5c. This antibody is specific for Rab5c. It does not recognize Rab5a and Rab5b proteins.		
Reactivity:	Reacts against human, rat, mouse, canine and monkey proteins.		
Usage:	Western blot 1:250-1:2,000 Immunofluorescence ND Immunohistochemistry (paraffin) ND Immunohistochemistry (frozen) ND		

Reactivity Chart

Sample	Western Blot	Immuno-fluorescence	Immuno-Histochemistry (p)	Immuno-Histochemistry (f)
human	+++	ND	ND	ND
rat	+++	ND	ND	ND
mouse	+++	ND	ND	ND
canine	+++	ND	ND	ND
monkey	+++	ND	ND	ND

Storage:	Store at -20 C for long-term storage. Store at 2-8 C for up to one month.
Special instructions:	Avoid freeze/thaw cycles.
References:	1. Cardoso MHS, PhD Thesis, NOVA University of Lisbon, Portugal 2018 For research use only, not for diagnostic use



Anti-Rab5c Ab at 1/500 dilution; lysates at 100 µg per lane; rabbit polyclonal to goat IgG (HRP) at 1/10,000 dilution;

Generated by - <http://www.sicgen.pt>