

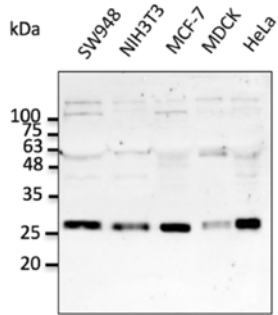
## Rab5a Polyclonal Antibody

<b>Catalogue No*:</b>	AB0009-200	<b>Price/Unit*:</b>	320.00
<b>Source:</b>	3	<b>Quantity/unit size*:</b>	800 g
<b>Description:</b>	Goat polyclonal antibody to mouse Rab5a. Rab5a belongs to the small GTPase superfamily, Rab family. Rab5a is a Early Endosome Marker and functions as a key regulator of vesicular trafficking during early endocytosis.  <b>Alternative names:</b> RAB5A, RAS-associated protein RAB5A, ras-related protein Rab-5A antibody.		
<b>Immunogen:</b>	Purified recombinant peptide derived from within residues 115 aa to the C-terminus of mouse Rab5a produced in <i>E. coli</i> .		
<b>Specificity:</b>	Detects Rab5a protein by Western blot in cell lysates of transfected cells with GFP-Rab5a. This Ab is specific for Rab5a, it does not recognise Rab5b and Rab5c.		
<b>Reactivity:</b>	Reacts against human, rat, mouse, canine and monkey proteins.		
<b>Usage:</b>	Western blot 1:250-1:5,000 Immunofluorescence 1:50-1:250 Immunohistochemistry (paraffin) ND Immunohistochemistry (frozen) ND		

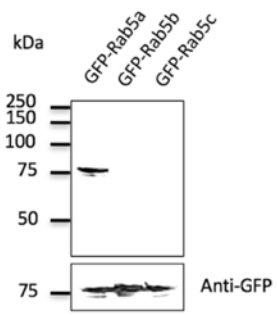
### Reactivity Chart

Sample	Western Blot	Immuno-fluorescence	Immuno-Histochemistry (p)	Immuno-Histochemistry (f)
human	+++	+++	ND	ND
rat	+++	+++	ND	ND
mouse	+++	+++	ND	ND
canine	+++	+++	ND	ND
monkey	+++	+++	ND	ND

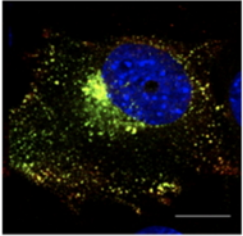
<b>Storage:</b>	Store at -20 C for long term storage. Store at 2-8 C for up to one month.
<b>Special instructions:</b>	Avoid freeze/thaw cycles.
<b>References:</b>	For research use only, not for diagnostic use



Anti-Rab5a Ab at 1/2,500 dilution; lysates at 50 µg per lane; rabbit polyclonal to goat IgG (HRP) at 1/10,000 dilution;



Anti-Rab5a Ab at 1/500 dilution; 293 cells transfected with GFP-Rab5; rabbit polyclonal to goat IgG (HRP) at 1/10,000 dilution;



Immunofluorescence – anti-Rab5a Ab in transduced Hepa1-6 cells with Ad GFP-Rab5a at 1/50 dilution; cells were fixed with 4% of PFA;