



## Rab35 Polyclonal Antibody

<b>Catalogue No*:</b>	AB0198-200	<b>Price/Unit*:</b>	320.00
<b>Source:</b>	3	<b>Quantity/unit size*:</b>	800 g
<b>Description:</b>	<p>RAB35 belongs to the large RAB family of low molecular weight GTPases that are involved in intracellular membrane trafficking. Rab35 is restricted to the plasma membrane and endocytic compartments and controls a fast endocytic-recycling pathway.</p> <p><b>Alternative names:</b> RAB1C, GTP-binding protein RAY, H-ray, ras-related protein Rab-35; ras-related protein rab-1C and RAY antibody.</p>		
<b>Immunogen:</b>	Purified recombinant peptide derived from within residues 110 aa to the C-terminus of mouse Rab35 produced in <i>E. coli</i> .		
<b>Specificity:</b>	Detects Rab35 in cell lysates and transfected cells by Western blot.		
<b>Reactivity:</b>	Reacts against human, rat, mouse, canine and monkey proteins.		
<b>Usage:</b>	Western blot 1:250-1:2,000 Immunofluorescence ND Immunohistochemistry (paraffin) ND Immunohistochemistry (frozen) ND		

### Reactivity Chart

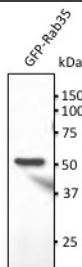
Sample	Western Blot	Immuno-fluorescence	Immuno-Histochemistry (p)	Immuno-Histochemistry (f)
human	+++	ND	ND	ND
rat	+++	ND	ND	ND
mouse	+++	ND	ND	ND
monkey	+++	ND	ND	ND
canine	+++	ND	ND	ND

**Storage:** Store at -20 C for long-term storage. Store at 2-8 C for up to one month.

**Special instructions:** Avoid freeze/thaw cycles.

**References:**

For research use only, not for diagnostic use



Anti-Rab35 Ab at 1/1,000 dilution; 293HEK transfected with GFP-Rab35; lysates at 100 µg per lane; rabbit polyclonal to goat IgG (HRP) at 1/10,000 dilution;

