

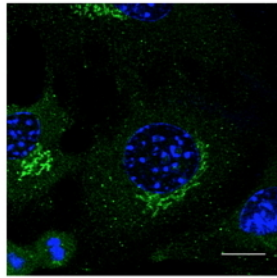
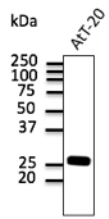
Rab3 Pan Polyclonal Antibody

Catalogue No*:	AB10032-200	Price/Unit*:	320.00
Source:	3	Quantity/unit size*:	600 g
Description:	Goat polyclonal antibody to mouse Rab3. Rab3 belongs to the small GTPase superfamily, Rab family. Rab3 is involved in exocytosis by regulating a late step in synaptic vesicle fusion. Could play a role in neurotransmitter release by regulating membrane flow in the nerve terminal. Alternative names: RAB3A, RAB3B, RAB3C, RAB3D, RAS-associated protein RAB3A, ras-related protein Rab-3B, RAS-associated protein RAB3C, RAS-associated protein RAB3D, ras-related protein Rab-3A, ras-related protein Rab-3B, ras-related protein Rab-3C, ras-related protein Rab-3D antibody.		
Immunogen:	Purified recombinant peptides derived from within residues 110 aa to the C-terminus of mouse Rab3a produced in <i>E. coli</i> .		
Specificity:	Detects total Rab3 protein in the following human, rat and mouse whole cell lysates and transfected cells with GFP-Rab3a, GFP-Rab3b and GFP-Rab3c cds by Western blot.		
Reactivity:	Reacts against human, rat, mouse, canine and monkey proteins.		
Usage:	Western blot 1:250-1:1,000 Immunofluorescence 1:50-1:250 Immunohistochemistry (paraffin) 1:250-1:1,500 Immunohistochemistry (froz) 1:250-1:1,500		

Reactivity Chart

Sample	Western Blot	Immuno-fluorescence	Immuno-Histochemistry (p)	Immuno-Histochemistry (f)
human	+++	+++	+++	+++
rat	+++	+++	+++	+++
mouse	+++	+++	+++	+++
canine	+++	+++	+++	+++
monkey	+++	+++	+++	+++

Storage:	Store at -20 C for long term storage. Store at 2-8 C for up to one month.
Special instructions:	Avoid freeze/thaw cycles.
References:	1. Encarnao M, Espada L, Escrevente C, et al. <i>J Cell Biol.</i> 2016 Jun 20. PMID: 27325790 For research use only, not for diagnostic use



Anti-Rab3 Ab at 1/500 dilution; AtT-20 cell line lysates at 100 μ g per lane; rabbit polyclonal to goat IgG (HRP) at 1/10,000 dilution;

Immunofluorescence – anti-Rab3 Ab in B6 cells at 1/50 dilution; cells were fixed with methanol;