



Rab28 Polyclonal Antibody

Catalogue No*:	AB0075-200	Price/Unit*:	320.00
Source:	3	Quantity/unit size*:	600 g
Description:	RAB28 belongs to the large RAB family of low molecular weight GTPases that are involved in intracellular membrane trafficking.		
Immunogen:	Purified recombinant peptide derived from within residues 120 aa to the C-terminus of mouse Rab28 produced in <i>E. coli</i> .		
Specificity:	Detects Rab28 by Western blot in transfected cells with GFP-Rab28.		
Reactivity:	Reacts against human, rat, mouse, canine and monkey proteins.		
Usage:	Western blot 1:250-1:2,000 Immunofluorescence 1:25-1:250 Immunohistochemistry (paraffin) ND Immunohistochemistry (frozen) ND		

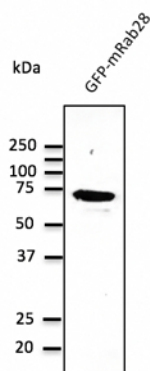
Reactivity Chart

Sample	Western Blot	Immuno-fluorescence	Immuno-Histochemistry (p)	Immuno-Histochemistry (f)
human	+++	+++	ND	ND
rat	+++	+++	ND	ND
mouse	+++	+++	ND	ND
canine	+++	+++	ND	ND
monkey	+++	+++	ND	ND

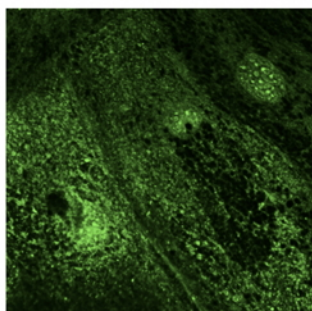
Storage: Store at -20 C for long term storage. Store at 2-8 C for up to one month.

Special instructions: Avoid freeze/thaw cycles.

References:
For research use only, not for diagnostic use



Anti-Rab28 Ab at 1/1,000 dilution; HEK293 cells transfected with GFP-Rab28; lysates at 50 µg per lane; rabbit polyclonal to goat IgG (HRP) at 1/10,000 dilution;



Confocal immunofluorescence of primary RPE cells with Rab28 Ab at 1/100 dilution;

