

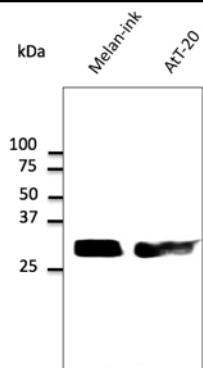
## Rab27 Pan Polyclonal Antibody

<b>Catalogue No*:</b>	AB7223-200	<b>Price/Unit*:</b>	300.00
<b>Source:</b>	3	<b>Quantity/unit size*:</b>	600 g
<b>Description:</b>	Goat polyclonal antibody to mouse Rab27. Rab27 belongs to the small GTPase superfamily, Rab family. The protein is membrane-bound and involved in lysosome-related vesicle transport and small GTPase mediated signal transduction.  <b>Alternative names:</b> C25KG, GS2, GTP-binding protein Ram, rab-27, Rab27a, Rab27b, ras-related protein Rab-27A, ras-related protein Rab-27B, RAB27, RAM antibody.		
<b>Immunogen:</b>	Purified recombinant peptides derived from within residues 120 aa to the C-terminus of mouse Rab27a and Rab27b produced in <i>E. coli</i> .		
<b>Specificity:</b>	Detects total Rab27 levels by Western blot in the following human, rat and mouse whole cell lysates and transfected cells with GFP-Rab27a and GFP-Rab27b cds.		
<b>Reactivity:</b>	Reacts against human, rat, mouse, canine and monkey proteins.		
<b>Usage:</b>	Western blot 1:500-1:2,000 Immunofluorescence 1:50-1:250 Immunohistochemistry (paraffin) 1:50-1:400 Immunohistochemistry (frozen) 1:50-1:400		

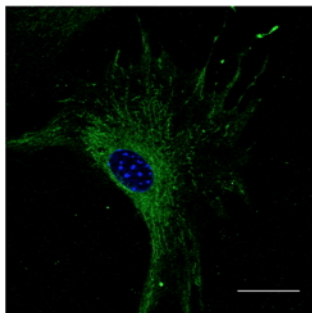
### Reactivity Chart

Sample	Western Blot	Immuno-fluorescence	Immuno-Histochemistry (p)	Immuno-Histochemistry (f)
human	+++	+++	+++	+++
rat	+++	+++	+++	+++
mouse	+++	+++	+++	+++
canine	+++	+++	+++	+++
monkey	+++	+++	+++	+++

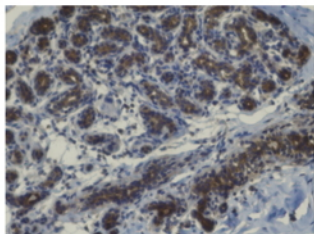
<b>Storage:</b>	Store at -20 C for long term storage. Store at 2-8 C for up to one month.
<b>Special instructions:</b>	Avoid freeze/thaw cycles.
<b>References:</b>	<ol style="list-style-type: none"> <li>1. Ferreira JV, Rosa Soares A, Ramalho JS, et al. <i>PLoS One</i> 2019 Oct. PMID:31613922</li> <li>2. Schorb TS, PhD Thesis, University of Berlin, Germany 2018</li> </ol> <p>For research use only, not for diagnostic use</p>



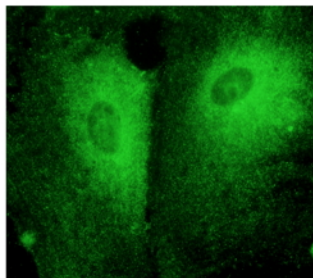
Anti-Rab27 pan Ab at 1/500 dilution; 50  $\mu$ g of total protein per lane; rabbit polyclonal to goat IgG (HRP) at 1/10,000 dilution;



Immunostaining of B6-RPE07 cells with Rab27 antibody (1/50);



Anti-Rab27a antibody IHC staining of human mammary tissue; immunohistochemistry of formalin-fixed, paraffin-embedded tissue after heat-induced antigen retrieval; antibody concentration 1/200;



Immunostaining of primary RPE cells with Rab27 antibody (1/50);