

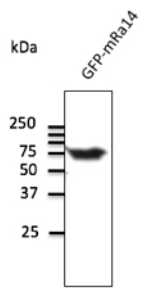
Rab14 Polyclonal Antibody

Catalogue No*:	AB0013-200	Price/Unit*:	300.00
Source:	3	Quantity/unit size*:	400 g
Description:	<p>RAB14 belongs to the large RAB family of low molecular weight GTPases that are involved in intracellular membrane trafficking. This protein is expressed at high levels in kidney, lung, brain, spleen and thymus and it is thought to be involved in vesicular trafficking and neurotransmitter release. It is also involved in the biosynthetic/recycling pathway between the Golgi and endosomal compartments.</p> <p>Alternative names: F protein-binding protein 1; bA165P4.3 (member RAS oncogene family); ras-related protein Rab-14; small GTP binding protein Rab14 antibody.</p>		
Immunogen:	Purified recombinant peptide derived from within residues 110 aa to the C-terminus of mouse Rab14 produced in <i>E. coli</i> .		
Specificity:	Detects Rab14 by Western blot in transfected cells with GFP-Rab14.		
Reactivity:	Reacts against human, rat, mouse, monkey and canine proteins.		
Usage:	Western blot 1:250-1:2,000 Immunofluorescence 1:25-1:200 Immunohistochemistry (paraffin) ND Immunohistochemistry (frozen) ND		

Reactivity Chart

Sample	Western Blot	Immuno-fluorescence	Immuno-Histochemistry (p)	Immuno-Histochemistry (f)
human	+++	+++	ND	ND
rat	+++	+++	ND	ND
mouse	+++	+++	ND	ND
canine	+++	+++	ND	ND
monkey	+++	+++	ND	ND

Storage:	Store at -20 C for long term storage. Store at 2-8 C for up to one month.
Special instructions:	Avoid freeze/thaw cycles.
References:	For research use only, not for diagnostic use



Anti-Rab14 Ab at 1/500 dilution;
lysates at 50 μ g per lane; rabbit
polyclonal to goat IgG (HRP) at
1/10,000 dilution;

Generated by - <http://www.sicgen.pt>