

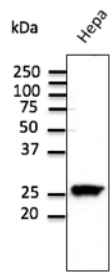
## Rab11 Pan Polyclonal Antibody

<b>Catalogue No*:</b>	AB3035-500	<b>Price/Unit*:</b>	450.00
<b>Source:</b>	3	<b>Quantity/unit size*:</b>	1.5 mg
<b>Description:</b>	Goat polyclonal antibody to mouse Rab11. Rab11 belongs to the small GTPase superfamily, Rab family. The protein is membrane-bound and plays essential roles in vesicle and granule targeting. It has been shown that Rab11 associates with recycling endosomes.  <b>Alternative names:</b> CATX-8, GTP-binding protein YPT3, member of RAS oncogene family, MGC1490, Rab11, RAB11A, RAB11B, RAB11C, Rab25, ras-related protein Rab-11B, RB11A, YL8 antibody.		
<b>Immunogen:</b>	Purified recombinant peptides derived from within residues 110 aa to the C-terminus of mouse Rab11a, Rab11b and Rab11c (Rab25) produced in <i>E. coli</i> .		
<b>Specificity:</b>	Detects levels of Rab11 by Western blot in the following human, rat and mouse whole cell lysates and transfected cells with GFP-Rab11a, GFP-Rab11b and GFP-Rab11c (Rab25) cds.		
<b>Reactivity:</b>	Reacts against human, rat, mouse, canine and monkey proteins.		
<b>Usage:</b>	Western blot 1:250-1:2,000 Immunofluorescence ND Immunohistochemistry (paraffin) 1:100-1:400 Immunohistochemistry (frozen) 1:100-1:400		

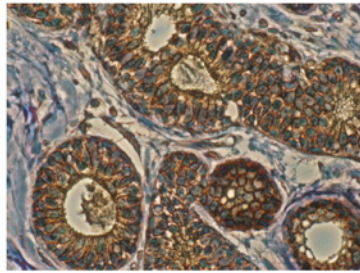
### Reactivity Chart

Sample	Western Blot	Immuno-fluorescence	Immuno-Histochemistry (p)	Immuno-Histochemistry (f)
human	+++	ND	+++	+++
rat	+++	ND	+++	+++
mouse	+++	ND	+++	+++
canine	+++	ND	+++	+++
monkey	+++	ND	+++	+++

<b>Storage:</b>	Store at -20 C for long term storage. Store at 2-8 C for up to one month.
<b>Special instructions:</b>	Avoid freeze/thaw cycles.
<b>References:</b>	1. Deissler HL, Lang GK and Lang GE. <i>Graefes Arch Clin Exp Ophthalmol</i> . 2018 Oct. PMID:30367290  For research use only, not for diagnostic use



Anti-Rab11 Ab at 1/500 dilution; Hepa cell line lysates at 100 µg per lane; rabbit polyclonal to goat IgG (HRP) at 1/10,000 dilution;



Anti-Rab11 antibody IHC staining of human mammary tissue; immunohistochemistry of formalin-fixed, paraffin-embedded tissue after heat-induced antigen retrieval; antibody concentration 1/200;