



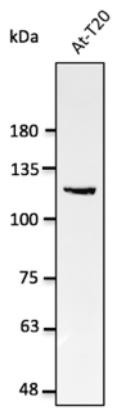
Nucleolin Polyclonal Antibody

Catalogue No*:	AB0291-100	Price/Unit*:	320.00
Source:	3	Quantity/unit size*:	100 g
Description:	<p>Goat polyclonal antibody to Nucleolin. NCL is a eukaryotic nucleolar phosphoprotein involved in the synthesis and maturation of ribosomes. It is found associated with pre-ribosomal particles and intranucleolar chromatin. May play a role in the process of transcriptional elongation and chromatin decondensation by binding to histone H1.</p> <p>Alternative names: B530004O11Rik, C23, D0Nds28, D1Nds28, Nucl antibody.</p>		
Immunogen:	Recombinant peptide derived from within residues 500 aa to the C-terminus of human NCL produced in <i>E. coli</i> .		
Specificity:	Detects endogenous levels of NCL by Western blot.		
Reactivity:	Reacts against human, rat, mouse, canine and monkey proteins.		
Usage:	Western blot 1:1,000-1:5,000 Immunofluorescence ND Immunohistochemistry (paraffin) ND Immunohistochemistry (frozen) ND		

Reactivity Chart

Sample	Western Blot	Immuno-fluorescence	Immuno-Histochemistry (p)	Immuno-Histochemistry (f)
human	+++	ND	ND	ND
rat	+++	ND	ND	ND
mouse	+++	ND	ND	ND
canine	+++	ND	ND	ND
monkey	+++	ND	ND	ND

Storage:	Store at -20 C for long-term storage. Store at 2-8 C for up to one month.
Special instructions:	Avoid freeze/thaw cycles.
References:	For research use only, not for diagnostic use



Anti-NCL Ab at 1/2,500 dilution;
lysates at 50 μ g per lane; rabbit
polyclonal to goat IgG (HRP) at
1/10,000 dilution;

Generated by - <http://www.sicgen.pt>