

mCherry Polyclonal Antibody

Catalogue No*:	AB0081-500	Price/Unit*:	450.00
Source:	3	Quantity/unit size*:	1.5 mg
Description:	Goat polyclonal antibody to mCherry (Cherry fluorescent protein). mCherry protein is derived from DsRed, an engineered red fluorescent protein from so-called disc corals of the genus <i>Discosoma</i> . Alternative names: Cherry fluorescent protein; dsRed, red fluorescent protein, tdTomato antibody.		
Immunogen:	Purified recombinant peptide produced in <i>E. coli</i> .		
Specificity:	In 293HEK cells transfected with cds plasmid detects a band of 29 kDa by Western blot. This antibody (AB0081) recognizes very well tdTomato and does not cross-react to GFP (green fluorescent protein).		
Reactivity:	Red Fluorescent Protein (dsRed), tdTomato and mCherry.		
Usage:	Western blot 1:500-1:5,000 Immunofluorescence 1:50-1:500 Immunohistochemistry (paraffin) 1:50-1:500 Immunohistochemistry (frozen) 1:50-1:500		

Reactivity Chart

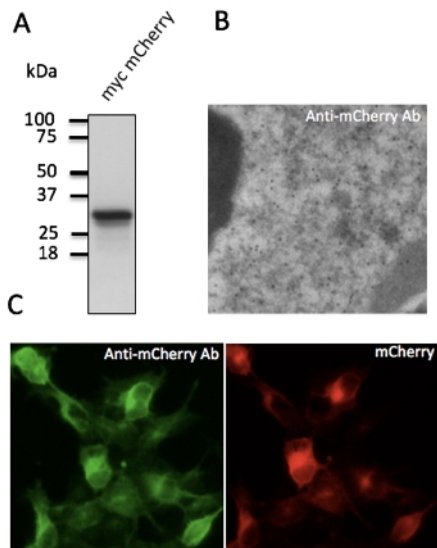
Sample	Western Blot	Immuno-fluorescence	Immuno-Histochemistry (p)	Immuno-Histochemistry (f)
Transfected cells	+++	+++	+++	+++

Storage:	Store at -20 C for long term storage. Store at 2-8 C for up to one month.
Special instructions:	Avoid freeze/thaw cycles.

References:

1. Luo H, Liu HZ, Zhang WW, et al. *Cell Rep.* 2019 Nov. PMID:31747607
2. Stewart S, Le Bleu HK, Yette GA, et al. *bioRxiv* Oct 2019
3. Marin-Mogollon C, Salman AM, Koolen KMJ, et al. *Front Cell Infect Microbiol.* 2019 Apr. PMID:31058097
4. Saito YC, Maejima T, Nishitani M, et al. *J Neurosci.* 2018 Jul. PMID:29915137
5. Cattaud V, PhD Thesis, University of Toulouse, France 2018
6. Raven AP, PhD Thesis, Edinburg University, United Kingdom 2018
7. Saito K, Nobuhisa I, Harada K et al. *Exp Cell Res.* 2018 Feb. PMID:29458175
8. Soya S, Takahashi TM, McHugh TJ, et al. *Nat Commun.* 2017 Nov. PMID:29151577
9. Fiuza M, Rostosky CM, Parkinson GT, et al. *J Cell Biol.* 2017 Aug. PMID:28855251
10. Hasegawa E, Maejima T, Yoshida T et al. *Proc Natl Acad Sci U S A.* 2017 Apr. PMID:28396432
11. Zhang-Hooks Y, Agarwal A, Mishina M, et al. *Neuron.* 2016 Jan. Supplemental Information, PMID:26774161
12. Stykel MG, MSc Thesis, University of Calgary 2016
13. Nakatsukasa K, Nishimura T, Byrne SD, et al. *Mol Cell.* 2015 Jul. Supplemental Information, PMID:25982115
14. Julkowska MM, McLoughlin F, Galvan-Ampudia CS, et al. *Plant Cell Environ.* 2015 Mar, PMID:25074439
15. Okorochoa AE, PhD Thesis, University of Leicester, United Kingdom 2015
16. Dglon N, Merienne N, Genome editing for the treatment of huntington's disease, EP 2982758 A1 Patent, 2014
17. Benske A, MSc Thesis, The University of British Columbia, Canada 2014

For research use only, not for diagnostic use



A - Anti-mCherry Ab at 1/1,000 dilution; 293HEK cells transduced with myc-mCherry Ad; lysates at 100 μ g per lane; rabbit polyclonal to goat IgG (HRP) at 1/10,000 dilution;
B - Immunogold labeling of RPE, *in vivo* injected with mCherry expressing vector;
C - Immunofluorescence - anti-mCherry Ab (AB0081) in 293HEK cells transfected with mCherry-Rab1a at 1/50 dilution; cells were fixed with 4% of PFA;