

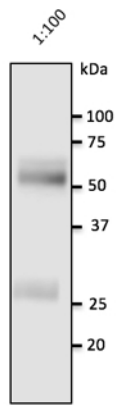
Human IgG Polyclonal Antibody

Catalogue No*:	AB0147-200	Price/Unit*:	300.00
Source:	3	Quantity/unit size*:	800 g
Description:	Goat polyclonal antibody to human IgG. IgG is a monomeric immunoglobulin, with two heavy chains and two light chains. IgG can be found in blood and is the most abundant immunoglobulin, constituting 75% of serum immunoglobulins in humans. There are 4 subclasses (IgG1 (66%), IgG2 (23%), IgG3 (7%) and IgG4 (4%)) that can bind to many types of pathogens, protecting the body against them by complement activation, opsonization for phagocytosis and neutralisation of their toxins. Alternative names: Immunoglobulin G antibody.		
Immunogen:	Full IgG affinity purified from serum of four human donors tested and found negative for Hepatitis B, Hepatitis C, HIV I and II antibodies using protein G. Purity >95% by SDS-PAGE.		
Specificity:	Using serum samples detects the light and heavy chains by Western blot.		
Reactivity:	Reacts against human.		
Usage:	Western blot 1:500-1:2,000 Immunofluorescence ND Immunohistochemistry (paraffin) ND Immunohistochemistry (frozen) ND		

Reactivity Chart

Sample	Western Blot	Immuno-fluorescence	Immuno-Histochemistry (p)	Immuno-Histochemistry (f)
human	+++	ND	ND	ND
rat	ND	ND	ND	ND
mouse	ND	ND	ND	ND
canine	ND	ND	ND	ND
monkey	ND	ND	ND	ND

Storage:	Store at -20 C for long-term storage. Store at 2-8 C for up to one month.
Special instructions:	Avoid freeze/thaw cycles.
References:	For research use only, not for diagnostic use



Anti-IgG Ab at 1:2,500 dilution; 10 μ l of human serum per lane; Rabbit polyclonal to goat IgG (HRP) at 1/10,000 dilution;

Generated by - <http://www.sicgen.pt>