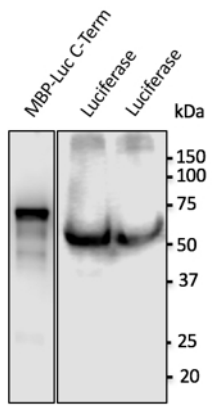


## Firefly Luciferase Polyclonal Antibody

<b>Catalogue No*:</b>	AB0131-500	<b>Price/Unit*:</b>	450.00	
<b>Source:</b>	3	<b>Quantity/unit size*:</b>	1.5 mg	
<b>Description:</b>	<p>Goat polyclonal antibody to Firefly luciferase. Luciferase is a widely used reporter protein to study gene expression. Luciferase catalyses a bioluminescent reaction which requires luciferin as a substrate, ATP and Mg<sup>2+</sup>. A cell extract containing luciferase mixed luciferin in the presence of ATP and Mg<sup>2+</sup>, results in a flash of light that decays rapidly and can be detected by a luminometer. The total light emission is proportional to the luciferase activity of the sample.</p> <p><b>Alternative names:</b> Luc and Luciferin 4-monooxygenase antibody.</p>			
<b>Immunogen:</b>	Purified recombinant peptide derived from within residues 340 aa to the C-terminus of Luciferase produced in <i>E. coli</i> .			
<b>Specificity:</b>	In 293HEK cells transfected with cds plasmid detects a band of 62 kDa by Western blot.			
<b>Reactivity:</b>	Firefly ( <i>Photinus pyralis</i> )			
<b>Usage:</b>	Western blot 1:250-1:2,000 Immunofluorescence ND Immunohistochemistry (paraffin) ND Immunohistochemistry (frozen) ND			
<b>Reactivity Chart</b>				
<b>Sample</b>	<b>Western Blot</b>	<b>Immuno-fluorescence</b>	<b>Immuno-Histochemistry (p)</b>	<b>Immuno-Histochemistry (f)</b>
transfected cells	+++	ND	ND	ND
<b>Storage:</b>	Store at -20 C for long-term storage. Store at 2-8 C for up to one month.			
<b>Special instructions:</b>	Avoid freeze/thaw cycles.			
<b>References:</b>	For research use only, not for diagnostic use			



Anti-Luciferase Ab at 1/500 dilution; 293HEK transduced with lentivirus expressing luciferase; lysates at 100  $\mu$ g per lane; rabbit polyclonal to goat IgG (HRP) at 1/10,000 dilution;