

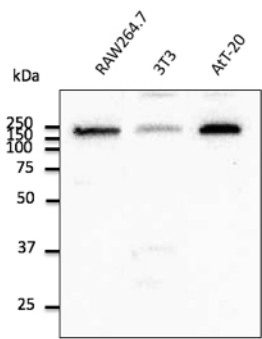
## EEA1 Polyclonal Antibody

<b>Catalogue No*:</b>	AB0006-200	<b>Price/Unit*:</b>	320.00
<b>Source:</b>	3	<b>Quantity/unit size*:</b>	600 g
<b>Description:</b>	Goat polyclonal antibody to EEA1 ? early endosome marker. EEA1 is Early Endosome Antigen 1 protein that binds phospholipid vesicles containing phosphatidylinositol 3-phosphate, which is necessary for endosomal trafficking.  <b>Alternative names:</b> early endosome antigen 1, 162kD; early endosome-associated protein; endosome-associated protein p162; zinc finger FYVE domain-containing protein 2 antibody.		
<b>Immunogen:</b>	Purified recombinant peptide within residues 1230 aa to the C-terminus of human EEA1 produced in <i>E. coli</i> .		
<b>Specificity:</b>	Detects a band of 180 kDa by Western blot in the following human, mouse and rat whole cell lysates.		
<b>Reactivity:</b>	Reacts against human, mouse and rat proteins.		
<b>Usage:</b>	Western blot 1:250-1:1,000 Immunofluorescence 1:25-1:250 Immunohistochemistry (paraffin) ND Immunohistochemistry (frozen) ND		

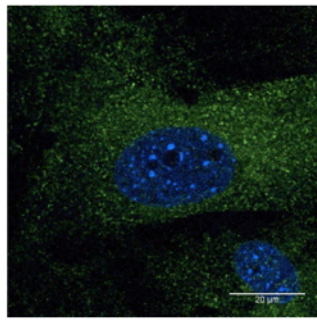
### Reactivity Chart

Sample	Western Blot	Immuno-fluorescence	Immuno-Histochemistry (p)	Immuno-Histochemistry (f)
human	+++	+++	ND	ND
rat	+++	+++	ND	ND
mouse	+++	+++	ND	ND
canine	+++	+++	ND	ND
monkey	+++	+++	ND	ND

<b>Storage:</b>	Store at -20 C for long term storage. Store at 2-8 C for up to one month.
<b>Special instructions:</b>	Avoid freeze/thaw cycles.
<b>References:</b>	For research use only, not for diagnostic use



Anti-EEA1 Ab at 1/500 dilution; Rabbit polyclonal to goat IgG (HRP) at 1/10,000 dilution;



Immunostaining of primary fibroblasts with EEA1 antibody at 1/50 dilution;