

## Connexin 43 Polyclonal Antibody

<b>Catalogue No*:</b>	AB0016-500	<b>Price/Unit*:</b>	450.00
<b>Source:</b>	3	<b>Quantity/unit size*:</b>	2 mg
<b>Description:</b>	Goat polyclonal to connexin 43, which is a member of the connexin family. Cx43 is a component of gap junctions, which are composed of arrays of intercellular channels that provide a route for the diffusion of low molecular weight materials from cell to cell. This protein is the major protein of gap junctions in embryonic development and in the heart that are thought to have a crucial role in the synchronized contraction of the heart.  <b>Alternative names:</b> AVSD3, CX43, DFNB38, gap junction protein, alpha 1, 43kDa, GJA1, GJAL HSS, HLHS1, ODDD antibody.		
<b>Immunogen:</b>	Purified recombinant peptide derived from within residues 230 aa to the C-terminus of rat CX43 produced in <i>E. coli</i> .		
<b>Specificity:</b>	Detects endogenous levels of total connexin 43.		
<b>Reactivity:</b>	Reacts against human, rat, mouse, canine and monkey proteins.		
<b>Usage:</b>	Western blot 1:500-1:2,000 Immunofluorescence 1:50-1:250 Immunohistochemistry (paraffin) 1:250-1:800 Immunohistochemistry (frozen) 1:250-1:800		

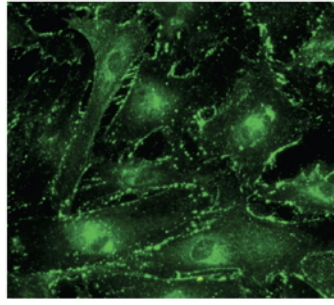
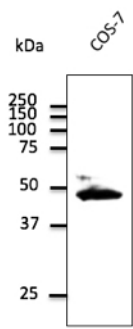
### Reactivity Chart

Sample	Western Blot	Immuno-fluorescence	Immuno-Histochemistry (p)	Immuno-Histochemistry (f)
human	+++	+++	+++	+++
rat	+++	+++	+++	+++
mouse	+++	+++	+++	+++
canine	+++	+++	+++	+++
monkey	+++	+++	+++	+++

<b>Storage:</b>	Store at -20 C for long term storage. Store at 2-8 C for up to one month.
-----------------	---

<b>Special instructions:</b>	Avoid freeze/thaw cycles.
------------------------------	---------------------------

<b>References:</b>	<ol style="list-style-type: none"> <li>Catarino S, Ribeiro-Rodrigues TM, Sa Ferreira R, et al. <i>Cells</i> 2020 Apr PMID: 32272685</li> <li>Wang W, Ye S, Zhang L, et al. <i>BMC Cardiovasc Disord</i> 2020. PMID:32066388</li> <li>Barbeitos JP, MSc Thesis, University of Coimbra, Portugal 2018</li> <li>Martins-Marques T, Pinho MJ, Zuzarte M. et al. <i>J Extracell Vesicles</i> 2016 Sep. PMID:27702427</li> <li>Paiva RA, MSc Thesis, University of Coimbra, Portugal 2015</li> <li>Ferreira RRS, MSc Thesis, University of Coimbra, Portugal 2015</li> <li>Martins-Marques T, Anjo SI, Pereira P, et al. <i>Mol Cell Proteomics</i> 2015 Aug 27. PMID:26316108 Supplemental Information</li> <li>Ribeiro-Rodrigues TM, Catarino S, Marques C, et al. <i>FASEB J</i> 2014 Nov. PMID:25070368</li> </ol> <p>For research use only, not for diagnostic use</p>
--------------------	---



Endogenous CX43 detected at 1/1,000 dilution; lysate at 100  $\mu$ g per lane and rabbit polyclonal to goat IgG (HRP) at 1/10,000 dilution;

Immunostaining of primary RPE cells with CX43 Ab at 1/100 dilution;