



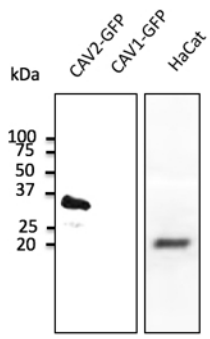
Caveolin-2 Polyclonal Antibody

Catalogue No*:	AB0094-200	Price/Unit*:	320.00
Source:	3	Quantity/unit size*:	600 g
Description:	<p>Goat polyclonal to Caveolin-2 ? caveolae marker. This scaffolding protein acts as an accessory protein in conjunction with CAV1 in targeting to lipid rafts and driving caveolae formation. It is involved in essential cellular functions, including cellular growth control, apoptosis, lipid metabolism and signal transduction. CAV2 might function as a tumor suppressor as well.</p> <p>Alternative names: CAV2, caveolin, caveolae protein 2 antibody.</p>		
Immunogen:	Recombinant peptide derived from within residues 50 aa to the N-terminus of human CAV2 produced in <i>E. coli</i> .		
Specificity:	Detects a band of approximately 20 kDa by Western blot in HaCat cell lysate and 45 kDa CAV2-GFP transfected cell lysate. This Ab does not recognize CAV1.		
Reactivity:	Reacts against human, canine and mouse proteins.		
Usage:	Western blot 1:500-1:2,000 Immunofluorescence 1:50-1:200 Immunohistochemistry (paraffin) 1:200-1:1,000 Immunohistochemistry (frozen) 1:200-1:1,000		

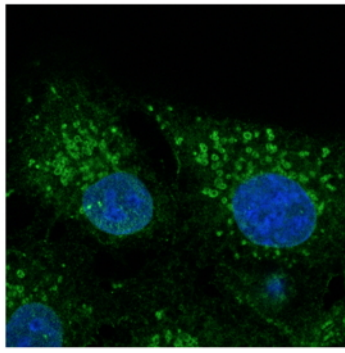
Reactivity Chart

Sample	Western Blot	Immuno-fluorescence	Immuno-Histochemistry (p)	Immuno-Histochemistry (f)
human	+++	+++	+++	+++
rat	+++	+++	+++	+++
mouse	+++	+++	+++	+++
canine	+++	+++	+++	+++
monkey	+++	+++	+++	+++

Storage:	Store at -20 C for long-term storage. Store at 2-8 C for up to one month.
Special instructions:	Avoid freeze/thaw cycles.
References:	For research use only, not for diagnostic use



Anti-CAV2 at 1/1,000 dilution; 50 μ g lysate per lane of transfected HEK293 and 100 μ g of HaCat cell line; rabbit polyclonal to goat IgG (HRP) at 1/10,000 dilution;



Immunofluorescence – anti-CAV2 Ab - Caveolae Marker at 1/100 dilution in NHI/3T3 cells; cells were fixed with methanol and permeabilized with 0.1% saponin;