

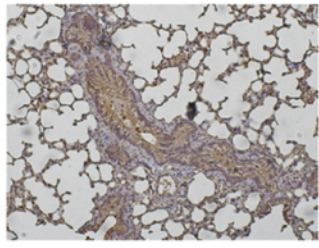
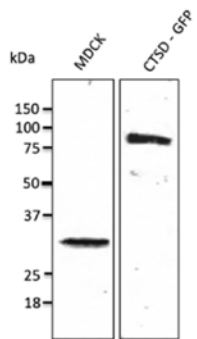
## Cathepsin D Polyclonal Antibody

<b>Catalogue No*:</b>	AB0043-500	<b>Price/Unit*:</b>	450.00
<b>Source:</b>	3	<b>Quantity/unit size*:</b>	1.5 mg
<b>Description:</b>	Goat polyclonal antibody to Cathepsin D. Cathepsin D is a lysosomal aspartic protease of the pepsin family. Acid protease active in intracellular protein breakdown. It is composed of a dimer of disulfide-linked heavy and light chains, both produced from a single protein precursor. It is involved in the pathogenesis of several diseases such as breast cancer and possibly Alzheimer disease.  <b>Alternative names:</b> ceroid-lipofuscinosis, CLN10; CPSD, CTSD, lysosomal aspartyl protease, lysosomal aspartyl peptidase, neuronal 10 antibody.		
<b>Immunogen:</b>	Purified recombinant peptide derived from within residues 275 aa to the C-terminus of human Cathepsin D produced in <i>E. coli</i> .		
<b>Specificity:</b>	This antibody gives a positive signal in the following human (Jurkat, HT1080, HUH, MDA-MB-231, ARPE19, SH-SY5Y), canine (MDCK) and monkey (COS-7) whole cell lysates.		
<b>Reactivity:</b>	Reacts against human, rat, mouse, canine and monkey proteins.		
<b>Usage:</b>	Western blot 1:250-1:1,000 Immunofluorescence 1:50-1:200 Immunohistochemistry (paraffin) 1:50-1:200 Immunohistochemistry (frozen) 1:50-1:200 IEM 1:50-1:200		

### Reactivity Chart

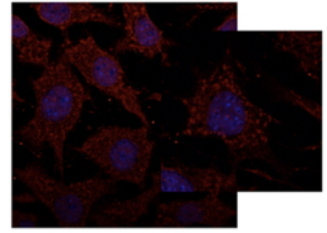
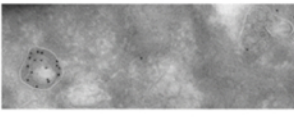
Sample	Western Blot	Immuno-fluorescence	Immuno-Histochemistry (p)	Immuno-Histochemistry (f)
human	+++	+++	+++	+++
rat	+++	+++	+++	+++
mouse	+++	+++	+++	+++
canine	+++	+++	+++	+++
monkey	+++	+++	+++	+++

<b>Storage:</b>	Store at -20 C for long term storage. Store at 2-8 C for up to one month.
<b>Special instructions:</b>	Avoid freeze/thaw cycles.
<b>References:</b>	1. Romagnoli M, Bresson L, Di-Cicco A, et al. <i>Development</i> 2020 Jan. PMID:31988184 2. Pelkonen L, Sato K, Reinisalo M, et al. <i>Mol Pharm</i> 2017 Mar. PMID:28112518  For research use only, not for diagnostic use



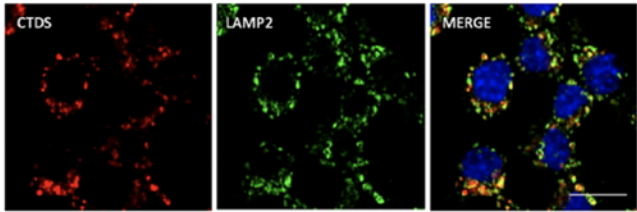
Immunoperoxidase of polyclonal antibody to CTSD (1/200) on paraformaldehyde-fixed paraffin-embedded mouse lung;

Anti-CTSD Ab at 1/500 dilution; endogenous CTSD (100 µg per lane) and transfected 293FT cell lysate (at 30 µg per lane); rabbit polyclonal to goat IgG (HRP) at 1/10,000 dilution;



Immunofluorescence – anti-CTSD Ab at 1/100 dilution in NHI/3T3 cells; cells were fixed with methanol and permeabilized with 0.1% saponin;

Immunogold labeling using melanocytes and anti-CTSD Ab;



Immunofluorescence – anti-CTSD Ab at 1/100 dilution in RAW264.7 cells; cells were fixed with PFA and permeabilized with 0.05% saponin;