

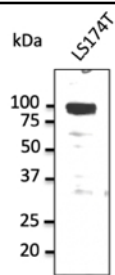
ATP1a1 Polyclonal Antibody

Catalogue No*:	AB0306-100	Price/Unit*:	320.00
Source:	3	Quantity/unit size*:	300 g
Description:	Goat polyclonal antibody to ATP1a1. Na ⁺ /K ⁺ -ATPase is composed of two subunits, a large catalytic subunit (alpha) and a smaller glycoprotein subunit (beta). This protein is an integral membrane protein responsible for establishing and maintaining the electrochemical gradients of Na and K ions across the plasma membrane. Alternative names: ATPase Na ⁺ /K ⁺ transporting subunit alpha 1 and CMT2DD antibody.		
Immunogen:	Purified recombinant peptide derived from within residues 100 aa to N-terminus of human ATP1a1 produced in E. coli.		
Specificity:	Detects endogenous levels of ATP1a1 by Western blot in the whole cell lysates (HeLa, LS174T, SKOV3, etc.).		
Reactivity:	Reacts against human, rat, mouse, canine and monkey proteins.		
Usage:	Western blot 1:500-1:2,000 Immunofluorescence ND Immunohistochemistry (paraffin) ND Immunohistochemistry (frozen) ND		

Reactivity Chart

Sample	Western Blot	Immuno-fluorescence	Immuno-Histochemistry (p)	Immuno-Histochemistry (f)
human	+++	ND	ND	ND
rat	+++	ND	ND	ND
mouse	+++	ND	ND	ND
canine	+++	ND	ND	ND
monkey	+++	ND	ND	ND

Storage:	Store at -20 C for long-term storage. Store at 2-8 C for up to one month.
Special instructions:	Avoid freeze/thaw cycles.
References:	For research use only, not for diagnostic use



Endogenous ATP1a1 detected with at 1/1,000 dilution; lysate at 50 μ g per lane and rabbit polyclonal to goat IgG (HRP) at 1/10,000 dilution;

Generated by - <http://www.sicgen.pt>