

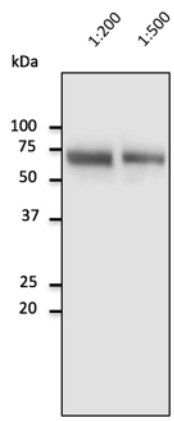
## Albumin Polyclonal Antibody

<b>Catalogue No*:</b>	AB0232-200	<b>Price/Unit*:</b>	300.00
<b>Source:</b>	3	<b>Quantity/unit size*:</b>	600 g
<b>Description:</b>	Goat polyclonal antibody to Albumin. Albumin is a soluble, monomeric, globular unglycosylated serum protein of 66 kDa. This protein comprises about one-half of the blood serum protein. It has a role in stabilizing extracellular fluid volume and is a carrier protein for fatty acids and steroids.  <b>Alternative names:</b> ALB, ANALBA, FDAH, PRO0883, PRO0903 and PRO1341 antibody.		
<b>Immunogen:</b>	Purified full length native Albumin.		
<b>Specificity:</b>	Using serum samples detects a band around 66 kDa by Western blot.		
<b>Reactivity:</b>	Reacts against human, rat, mouse, canine and monkey proteins.		
<b>Usage:</b>	Western blot 1:500-1:5,000 Immunofluorescence ND Immunohistochemistry (paraffin) ND Immunohistochemistry (frozen) ND		

### Reactivity Chart

Sample	Western Blot	Immuno-fluorescence	Immuno-Histochemistry (p)	Immuno-Histochemistry (f)
human	+++	ND	ND	ND
rat	+++	ND	ND	ND
mouse	+++	ND	ND	ND
canine	+++	ND	ND	ND
monkey	+++	ND	ND	ND

<b>Storage:</b>	Store at -20 C for long-term storage. Store at 2-8 C for up to one month.
<b>Special instructions:</b>	Avoid freeze/thaw cycles.
<b>References:</b>	For research use only, not for diagnostic use



Anti-Albumin Ab at 1/2,500 dilution; 10  $\mu$ l of diluted human serum per lane; Rabbit polyclonal to goat IgG (HRP) at 1/10,000 dilution;

Generated by - <http://www.sicgen.pt>