

Catalogue No. AB9929-500

Qty: 1.5 mg (3 mg/ml)

GST Polyclonal Antibody

Source: Goat

General description: Goat polyclonal antibody to GST (Glutathione-S-Transferase). GST is a 26 kDa protein encoded by the parasitic helminth *Schistosoma japonicum* and widely used in GST plasmid expression vectors as a fusion protein with foreign protein.

Form: Polyclonal antibody supplied as a 500 µl (3 mg/ml) aliquot in PBS, 20% glycerol and 0.05% sodium azide. This antibody is epitope-affinity purified from goat antiserum.

Immunogen: Purified recombinant protein produced in *E. coli*.

Specificity: In lysates of *E. coli* cells transformed with pGEX plasmid detects a band of 26 kDa by Western blot.

Reactivity: Reacts with *Schistosoma japonicum*. Not yet tested on other species.

Sample	Western blot	Immuno-fluorescence	Histochemistry (paraffin)	Histochemistry (frozen)
Transformed cells	+++	ND	ND	ND

+++ excellent, ++ good, + poor, ND not determined

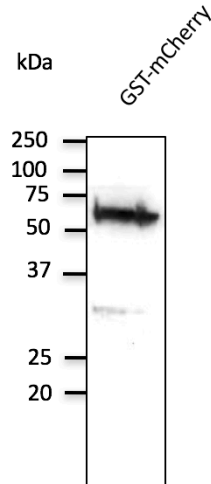
Usage: Western blot 1:500-1:2,000
 Immunofluorescence ND
 Immunohistochemistry (paraffin) ND
 Immunohistochemistry (frozen) ND

Storage: Store at -20 C for long-term storage. Store at 2-8 C for up to one month.

Special instructions: Avoid freeze/thaw cycles.

References:

1. Domingues L, Ismail A, Charro N, et al. *Cell Microbiol.* 2016 Jul;18(7):949-69. PMID: 26676327.



Anti-GST Ab at 1/2,000 dilution;
rabbit polyclonal to goat IgG (HRP)
at 1/10,000 dilution;

For research use only, not for diagnostic use

SICGEN's Proprietary Immunogen Policy

In order to produce high specific antibodies SICGEN has invested a lot of time and effort into selecting immunogen sequences. SICGEN has decided to protect this information by not publishing it on the website. However, these sequences are available on request.