

Catalogue No. AB9770-100
Qty: 200 µg (2 mg/ml)

mCherry Polyclonal Antibody

Source: Chicken

General description: Chicken polyclonal antibody to mCherry (Cherry fluorescent protein).

Alternative names: Cherry fluorescent protein; dsRed, red fluorescent protein, tdTomato antibody.

Form: Polyclonal antibody supplied as a 100 µl (2 mg/ml) aliquot in PBS, 20% glycerol and 0.05% sodium azide. Affinity purified using the immunogen immobilized on a solid support; Sample purity >95% (SDS-PAGE).

Immunogen: Affinity purified recombinant Red Fluorescent Protein (mCherry).

Specificity: This antibody recognizes a single band with predicted molecular weight in Western blot analysis.

Reactivity: Red Fluorescent Protein (dsRed), tdTomato and mCherry.

Sample	Western blot	Immuno-fluorescence	Histochemistry (paraffin)	Histochemistry (frozen)
Transfected cells	+++	+++	ND	ND

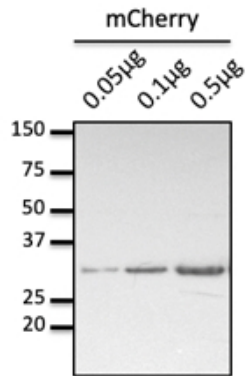
+++ excellent, ++ good, + poor, ND not determined

Usage: Western blot 1:10,000-1:30,000
 ELISA 1:20,000-1:50,000
 Immunofluorescence 1:200-1:1,000
 Immunohistochemistry (paraffin) ND
 Immunohistochemistry (frozen) ND

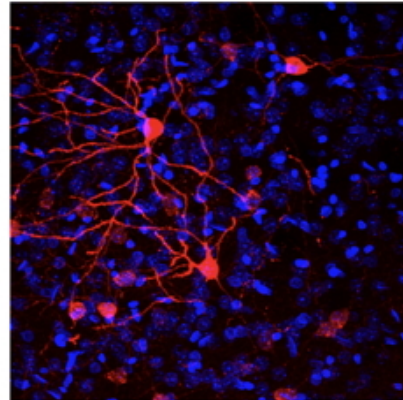
Storage: Store at -20 C for long-term storage. Store at 2-8 C for up to one month.

Special instructions: Avoid freeze/thaw cycles.

References:



Anti-mCherry Ab at 1/15,000 dilution; 0.05 µg, 0.1 µg and 0.5 µg of purified recombinant mCherry; rabbit polyclonal to chicken IgY (HRP) at 1/10,000 dilution;



Immunofluorescence – Mice brain transduced with AAV with Cre-dependent expression of mCherry. Free-floating slices fixed with 4% of PFA. Ab at 1/1,000 dilution; Courtesy of Rodrigues, Univ Minho;

For research use only, not for diagnostic use

SICGEN's Proprietary Immunogen Policy

In order to produce high specific antibodies SICGEN has invested a lot of time and effort into selecting immunogen sequences. SICGEN has decided to protect this information by not publishing it on the website. However, these sequences are available on request.