

Catalogue No. AB2166-100

Qty: 300 µg (3 mg/ml)

Venus Polyclonal Antibody

Source: Goat

General description: Goat polyclonal antibody to Venus. Venus is a genetic mutant of green fluorescent protein (GFP), derived from *Aequorea victoria*. Its excitation/emission peaks are 515/528 nm respectively and is often used as a donor-acceptor pair by researchers in FRET based co-localization studies.

Alternative names: GFP, Green fluorescent protein antibody.

Form: Polyclonal antibody supplied as a 100 µl (3 mg/ml) aliquot in PBS, 20% glycerol and 0.05%

sodium azide. This antibody is epitope-affinity purified from goat antiserum.

Immunogen: Purified recombinant GFP peptide from the jellyfish *aequorea victoria* produced in *E. coli*.

Specificity: In 293HEK cells transfected with cds plasmid detects a band of 27 kDa by Western blot. This antibody also recognizes Venus/GFP and does not cross-react to mCherry/red fluorescent proteins.

Reactivity: Venus, GFP, EGFP and YFP from *Aequorea victoria*.

| Sample | Western blot | Immuno-fluorescence | Histochemistry (paraffin) | Histochemistry (frozen) |
|-------------------|--------------|---------------------|---------------------------|-------------------------|
| Transfected cells | +++ | +++ | +++ | +++ |

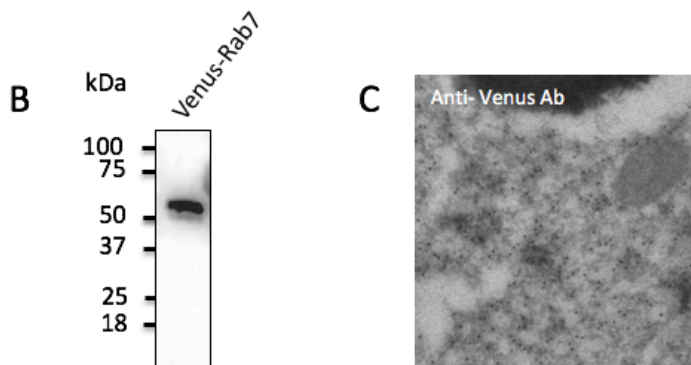
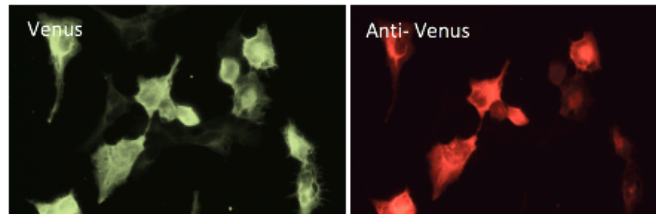
+++ excellent, ++ good, + poor, ND not determined

Usage: Western blot 1:500-1:2,000
 Immunofluorescence 1:50-1:1,000
 Immunohistochemistry (paraffin) 1:50-1:1,000
 Immunohistochemistry (frozen) 1:50-1:1,000

Storage: Store at -20 C for long-term storage. Store at 2-8 C for up to one month.

Special instructions: Avoid freeze/thaw cycles.

References:

A


A - Immunofluorescence – anti-Venus Ab in 293HEK cells transfected with Venus protein at 1/50 dilution; cells were fixed with 4% of PFA;
B – Anti-Venus Ab at 1/2,000 dilution; 293HEK cells transduced with Venus-Rab7 Ad; lysates at 50 µg per lane; rabbit polyclonal to goat IgG (HRP) at 1/10,000 dilution;
C - Immunogold labeling of epithelium cells, *in vivo* injected with Venus expressing vector;

For research use only, not for diagnostic use

SICGEN's Proprietary Immunogen Policy

In order to produce high specific antibodies SICGEN has invested a lot of time and effort into selecting immunogen sequences. SICGEN has decided to protect this information by not publishing it on the website. However, these sequences are available on request.