

Catalogue No. AB1140-100

Qty: 300 µg (3 mg/ml)

RFP Polyclonal Antibody

Source: Goat

General description: Goat polyclonal antibody to RFP (Red fluorescent protein). RFP is derived from DsRed, an engineered red fluorescent protein from so-called disc corals of the genus *Discosoma*.

Alternative names: Cherry fluorescent protein; dsRed, red fluorescent protein, tdTomato antibody.

Form: Polyclonal antibody supplied as a 100 µl (3 mg/ml) aliquot in PBS, 20% glycerol and 0.05% sodium azide. This antibody is epitope-affinity purified from goat antiserum.

Immunogen: Purified recombinant RFP peptide produced in *E. coli*.

Specificity: In 293HEK cells transfected with cds plasmid detects a band of 29 kDa by Western blot. This antibody also recognizes very well tdTomato and does not cross-react to GFP (green fluorescent protein).

Reactivity: Red Fluorescent Protein (dsRed), mCherry, mOrange, mPlum, mRFP, mStrawberry and tdTomato.

Sample	Western blot	Immuno-fluorescence	Histochemistry (paraffin)	Histochemistry (frozen)
Transfected cells	+++	+++	+++	+++

+++ excellent, ++ good, + poor, ND not determined

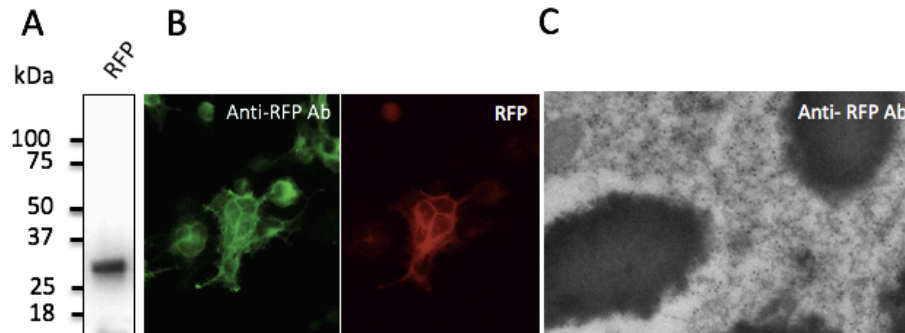
Usage: Western blot	1:500-1:2,000
Immunofluorescence	1:50-1:500
Immunohistochemistry (paraffin)	1:50-1:500
Immunohistochemistry (frozen)	1:50-1:500

Storage: Store at -20 C for long-term storage. Store at 2-8 C for up to one month.

Special instructions: Avoid freeze/thaw cycles.

References:

1. D Jiang, D Correa-Gallegos, S Christ, et al. *Nature Cell Biology* 2018 Apr. PMID:29593327
2. Tian DS, Peng J, Murugan M, et al. *J Neurosci.* 2017 Aug 16. PMID:28716963
3. Semerci F, Choi WT, Bajic A, et al. *Elife.* 2017 Jul 12. PMID:28699891



A - Anti-RFP Ab at 1/2,000 dilution; 293HEK cells transduced with RFP Ad; lysates at 50 µg per lane; rabbit polyclonal to goat IgG (HRP) at 1/10,000 dilution;
B - Immunofluorescence – anti-RFP Ab in 293HEK cells transfected with RFP at 1/50 dilution; cells were fixed with 4% of PFA;
C - Immunogold labeling of epithelium cells, *in vivo* injected with RFP expressing vector;

For research use only, not for diagnostic use

SICGEN's Proprietary Immunogen Policy

In order to produce high specific antibodies SICGEN has invested a lot of time and effort into selecting immunogen sequences. SICGEN has decided to protect this information by not publishing it on the website. However, these sequences are available on request.