



Product Data Sheet

001 Rev1 Mar 2020 by JR

Catalogue No. AB0325-100

Qty: 200 µg (2 mg/ml)

TMEM160 Polyclonal Antibody

Source: Goat

General description: Goat polyclonal antibody to TMEM160. This protein is a transmembrane protein expressed in some tissues.

Alternative names: transmembrane protein 160 antibody.

Form: Polyclonal antibody supplied as a 100 µl (2 mg/ml) aliquot in PBS, 20% glycerol and 0.05%

sodium azide. This antibody is epitope-affinity purified from goat antiserum.

Immunogen: Peptide derived from within residues 160 aa to the C-terminus of human TMEM160 protein.

Specificity: Detects endogenous levels of TMEM160 in Melan-ink and NIH3T3 by Western blot.

Reactivity: Reacts against human, rat, mouse, canine and monkey proteins.

| Sample | Western blot | Immuno-fluorescence | Histochemistry (paraffin) | Histochemistry (frozen) |
|--------|--------------|---------------------|---------------------------|-------------------------|
| human | +++ | ND | ND | ND |
| rat | +++ | ND | ND | ND |
| mouse | +++ | ND | ND | ND |
| canine | +++ | ND | ND | ND |
| monkey | +++ | ND | ND | ND |

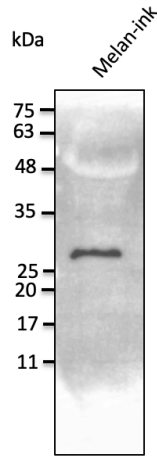
+++ excellent, ++ good, + poor, ND not determined

Usage: Western blot 1:500-1:2,000
Immunofluorescence ND
Immunohistochemistry (paraffin) ND
Immunohistochemistry (frozen) ND

Storage: Store at -20 C for long-term storage. Store at 2-8 C for up to one month.

Special instructions: Avoid freeze/thaw cycles.

References:



Anti-TMEM160 Ab at 1/1,000 dilution; lysates at 50 µg per lane; rabbit polyclonal to goat IgG (HRP) at 1/10,000 dilution;

For research use only, not for diagnostic use

SICGEN's Proprietary Immunogen Policy

In order to produce high specific antibodies SICGEN has invested a lot of time and effort into selecting immunogen sequences. SICGEN has decided to protect this information by not publishing it on the website. However, these sequences are available on request.