



Product Data Sheet

001 Rev1 Aug 2020 by JR

Catalogue No. AB0309-100

Qty: 300 µg (3 mg/ml)

ProQ Polyclonal Antibody

Source: Goat

General description: Goat polyclonal antibody to ProQ. This protein, a RNA chaperone, has a significant RNA binding activity. May regulate ProP activity through an RNA-based, post-transcriptional mechanism.

Alternative names: RNA chaperone ProQ antibody.

Form: Polyclonal antibody supplied as a 100 µl (3 mg/ml) aliquot in PBS, 20% glycerol and 0.05% sodium azide. This antibody is epitope-affinity purified from goat antiserum.

Immunogen: Recombinant peptide derived from Burkholderia ProQ produced in *E. coli*.

Specificity: Detects endogenous levels of ProQ by Western blot.

Reactivity: Reacts against proteins from *Burkholderia* genus.

Sample	Western blot	Immuno-fluorescence	Histochemistry (paraffin)	Histochemistry (frozen)
Burkholderia	+++	ND	ND	ND

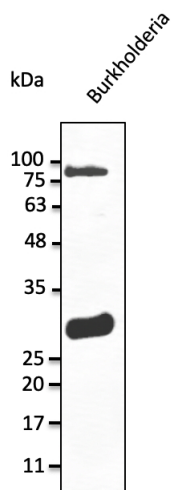
+++ excellent, ++ good, + poor, ND not determined

Usage: Western blot 1:500-1:2,000
Immunofluorescence ND
Immunohistochemistry (paraffin) ND
Immunohistochemistry (frozen) ND

Storage: Store at -20 C for long-term storage. Store at 2-8 C for up to one month.

Special instructions: Avoid freeze/thaw cycles.

References:



Anti-ProQ Ab at 1/1,000 dilution;
lysates at 50 µg per lane; rabbit
polyclonal to goat IgG (HRP) at
1/10,000 dilution;

For research use only, not for diagnostic use

SICGEN's Proprietary Immunogen Policy

In order to produce high specific antibodies SICGEN has invested a lot of time and effort into selecting immunogen sequences. SICGEN has decided to protect this information by not publishing it on the website. However, these sequences are available on request.