

Catalogue No. AB0291-100

Qty: 100 µg (1 mg/ml)

Nucleolin Polyclonal Antibody

Source: Goat

General description: Goat polyclonal antibody to Nucleolin. NCL is a eukaryotic nucleolar phosphoprotein involved in the synthesis and maturation of ribosomes. It is found associated with pre-ribosomal particles and intranucleolar chromatin. May play a role in the process of transcriptional elongation and chromatin decondensation by binding to histone H1.

Alternative names: B530004O11Rik, C23, D0Nds28, D1Nds28, Nucl antibody.

Form: Polyclonal antibody supplied as a 100 µl (1 mg/ml) aliquot in PBS, 20% glycerol and 0.05% sodium azide. This antibody is epitope-affinity purified from goat antiserum.

Immunogen: Recombinant peptide derived from within residues 500 aa to the C-terminus of human NCL produced in *E. coli*.

Specificity: Detects endogenous levels of NCL by Western blot.

Reactivity: Reacts against human, rat, mouse, canine and monkey proteins.

Sample	Western blot	Immuno-fluorescence	Histochemistry (paraffin)	Histochemistry (frozen)
human	+++	ND	ND	ND
rat	+++	ND	ND	ND
mouse	+++	ND	ND	ND
canine	+++	ND	ND	ND
monkey	+++	ND	ND	ND

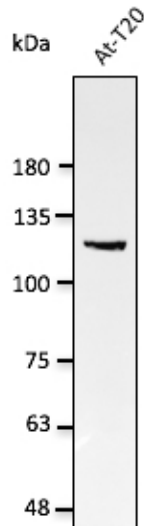
+++ excellent, ++ good, + poor, ND not determined

Usage: Western blot 1:1,000-1:5,000
 Immunofluorescence ND
 Immunohistochemistry (paraffin) ND
 Immunohistochemistry (frozen) ND

Storage: Store at -20 C for long-term storage. Store at 2-8 C for up to one month.

Special instructions: Avoid freeze/thaw cycles.

References:



Anti-NCL Ab at 1/2,500 dilution;
lysates at 50 µg per lane; rabbit
polyclonal to goat IgG (HRP) at
1/10,000 dilution;

For research use only, not for diagnostic use

SICGEN's Proprietary Immunogen Policy

In order to produce high specific antibodies SICGEN has invested a lot of time and effort into selecting immunogen sequences. SICGEN has decided to protect this information by not publishing it on the website. However, these sequences are available on request.