

**Catalogue No.** AB0289-100

**Qty:** 300 µg (3 mg/ml)

## Dis3L2 Polyclonal Antibody

**Source:** Goat

**General description:** Goat polyclonal antibody to Dis3L2. Dis3L2 is an exoribonuclease from the RNase II/RNB family which degrades RNAs in a 3'-5' direction. This protein has been implicated in cellular proliferation.

**Alternative names:** CG16940, Dis3L2, Dis3 like 3'-5' exoribonuclease 2, dmdis3l2, dmDis3l2, Dmel\CG16940 antibody.

**Form:** Polyclonal antibody supplied as a 100 µl (3 mg/ml) aliquot in PBS, 20% glycerol and 0.05% sodium azide. This antibody is epitope-affinity purified from goat antiserum.

**Immunogen:** Recombinant peptide derived from within residues 430 aa to the N-terminus of *Drosophila melanogaster* protein in *E. coli*.

**Specificity:** Detects endogenous levels of Dis3L2 in *Drosophila* protein extracts by Western blot.

**Reactivity:** Reacts against *Drosophila* proteins.

Sample	Western blot	Immuno-fluorescence	Histochemistry (paraffin)	Histochemistry (frozen)
Fruit fly	+++	ND	ND	ND

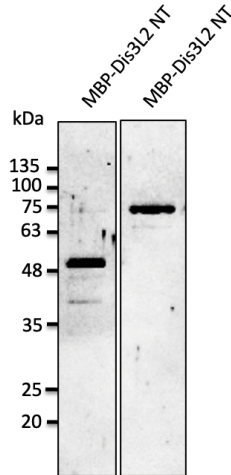
+++ excellent, ++ good, + poor, ND not determined

**Usage:** Western blot 1:500-1:2,000  
 Immunofluorescence ND  
 Immunohistochemistry (paraffin) ND  
 Immunohistochemistry (frozen) ND

**Storage:** Store at -20 C for long-term storage. Store at 2-8 C for up to one month.

**Special instructions:** Avoid freeze/thaw cycles.

### References:



Anti-Dis3L2 Ab at 1/2,500 dilution; lysates at 50 ng per lane; rabbit polyclonal to goat IgG (HRP) at 1/10,000 dilution;

For research use only, not for diagnostic use

**SICGEN's Proprietary Immunogen Policy**

In order to produce high specific antibodies SICGEN has invested a lot of time and effort into selecting immunogen sequences. SICGEN has decided to protect this information by not publishing it on the website. However, these sequences are available on request.