

Catalogue No. AB0133-100

Qty: 100 µg (1 mg/ml)

Ty1 Tag Polyclonal Antibody

Source: Goat

General description: Goat polyclonal antibody to Ty1 epitope tag. Ty1 epitope tag is useful for the labelling and detection of proteins by immunoprecipitation, immunostaining and immunoblotting techniques. Because of its small size, it is unlikely to affect the tagged protein's biochemical properties.

Alternative names: EVHTNQDPLD Tag antibody.

Form: Polyclonal antibody supplied as a 100 µl (1 mg/ml) aliquot in PBS, 20% glycerol and 0.05% sodium azide. This antibody is epitope-affinity purified from goat antiserum.

Immunogen: Purified recombinant peptide EVHTNQDPLD produced in *E. coli*.

Specificity: The antibody recognizes the Ty1-tag fused to the amino- or carboxy- termini of targeted proteins in transfected cells.

Reactivity: Ty1-tag fused to the amino- or carboxy- termini of proteins.

Sample	Western blot	Immuno-fluorescence	Histochemistry (paraffin)	Histochemistry (frozen)
transfected cells	+++	ND	ND	ND

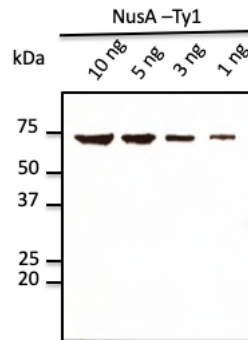
+++ excellent, ++ good, + poor, ND not determined

Usage: Western blot 1:500-1:5,000
 Immunofluorescence ND
 Immunohistochemistry (paraffin) ND
 Immunohistochemistry (frozen) ND

Storage: Store at -20 C for long-term storage. Store at 2-8 C for up to one month.

Special instructions: Avoid freeze/thaw cycles.

References:



Anti-Ty1 tag Ab at 2,500 dilution;
rabbit polyclonal to goat IgG
(HRP) at 1/10,000 dilution;

For research use only, not for diagnostic use

SICGEN's Proprietary Immunogen Policy

In order to produce high specific antibodies SICGEN has invested a lot of time and effort into selecting immunogen sequences. SICGEN has decided to protect this information by not publishing it on the website. However, these sequences are available on request.