

**Catalogue No.** AB0124-200

**Qty:** 600 µg (3 mg/ml)

## Cre Recombinase Polyclonal Antibody

**Source:** Goat

**General description:** Goat polyclonal antibody to Cre recombinase. Cre recombinase is a tyrosine recombinase enzyme derived from the P1 bacteriophage. The enzyme (38 kDa) is a member of the Integrase family of site specific recombinase and it is known to catalyse the site specific recombination event between two DNA recognition sites (loxP sites).

**Alternative names:** Cyclization recombinase antibody.

**Form:** Polyclonal antibody supplied as a 200 µl (3 mg/ml) aliquot in PBS, 20% glycerol and 0.05%

sodium azide. This antibody is epitope-affinity purified from goat antiserum.

**Immunogen:** Purified recombinant peptide produced in *E. coli*.

**Specificity:** In 293HEK cells transduced with Ad-Cre detects a band of 38 kDa by Western blot and gives a positive signal for the Cre recombinase protein.

**Reactivity:** Bacteriophage P1.

Sample	Western blot	Immuno-fluorescence	Histochemistry (paraffin)	Histochemistry (frozen)
Transfected cells	+++	ND	ND	ND

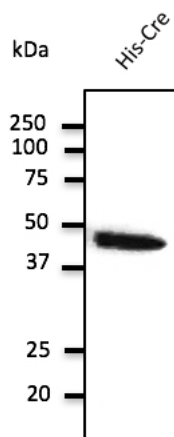
+++ excellent, ++ good, + poor, ND not determined

**Usage:** Western blot 1:500-1:2,000  
 Immunofluorescence ND  
 Immunohistochemistry (paraffin) ND  
 Immunohistochemistry (frozen) ND

**Storage:** Store at -20 C for long-term storage. Store at 2-8 C for up to one month.

**Special instructions:** Avoid freeze/thaw cycles.

**References:**



Anti-Cre Ab at 2,000 dilution;  
rabbit polyclonal to goat IgG (HRP)  
at 1/10,000 dilution;

For research use only, not for diagnostic use

**SICGEN's Proprietary Immunogen Policy**

In order to produce high specific antibodies SICGEN has invested a lot of time and effort into selecting immunogen sequences. SICGEN has decided to protect this information by not publishing it on the website. However, these sequences are available on request.