

Catalogue No. AB0099-200

Qty: 600 µg (3 mg/ml)

Goat Random Polyclonal Antibody

Source: Goat

General description: Goat polyclonal antibody to Random recombinant protein fragment. This Random recombinant protein fragment does not have any homology to known protein sequence. This antibody can be used in biochemical and cell biology experiments as a negative control.

Alternative names: Random goat IgG.

Form: Polyclonal antibody supplied as a 200 µl (3 mg/ml) aliquot in PBS, 20% glycerol and 0.05% sodium azide. This antibody is epitope-affinity purified from goat antiserum.

Immunogen: Purified random recombinant protein fragment
(ALRRTARNPRSCGRRHRGRWRRCADPCTHR
DRRSDRRERRPERRHQDRAARDGRAAAPDR
HERWRRSERRGGGSCSRQQLRLQRSNGRV)
produced in *E. coli*.

Specificity: Recognizes the immunogen by Western blot.

Reactivity: It does not react against any human protein.

Sample	Western blot	Immuno- fluorescence	Histochemistry (paraffin)	Histochemistry (frozen)
human	+++	ND	ND	ND

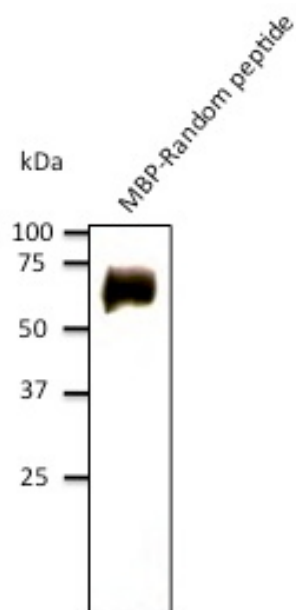
+++ excellent, ++ good, + poor, ND not determined

Usage: Western blot 1:500-1:2,000
Immunofluorescence ND
Immunohistochemistry (paraffin) ND
Immunohistochemistry (frozen) ND

Storage: Store at -20 C for long-term storage. Store at 2-8 C for up to one month.

Special instructions: Avoid freeze/thaw cycles.

References:



Anti-Random peptide Ab (AB0099)
at 1/1,000 dilution; 50 ng of
protein per lane; rabbit polyclonal
to goat IgG (HRP) at 1/10,000
dilution;

For research use only, not for diagnostic use

SICGEN's Proprietary Immunogen Policy

In order to produce high specific antibodies SICGEN has invested a lot of time and effort into selecting immunogen sequences. SICGEN has decided to protect this information by not publishing it on the website. However, these sequences are available on request.