

Catalogue No. AB0075-200

Qty: 600 µg (3 mg/ml)

Rab28 Polyclonal Antibody

Source: Goat

General description: RAB28 belongs to the large RAB family of low molecular weight GTPases that are involved in intracellular membrane trafficking.

Alternative names:

Form: Polyclonal antibody supplied as a 200 µl (3 mg/ml) aliquot in PBS, 20% glycerol and 0.05% sodium azide. This antibody is epitope-affinity purified from goat antiserum.

Reactivity: Reacts against human, rat, mouse, canine and monkey proteins.

Immunogen: Purified recombinant peptide derived from within residues 120 aa to the C-terminus of mouse Rab28 produced in *E. coli*.

Specificity: Detects Rab28 by Western blot in transfected cells with GFP-Rab28.

Sample	Western blot	Immuno-fluorescence	Histochemistry (paraffin)	Histochemistry (frozen)
human	+++	+++	ND	ND
rat	+++	+++	ND	ND
mouse	+++	+++	ND	ND
canine	+++	+++	ND	ND
monkey	+++	+++	ND	ND

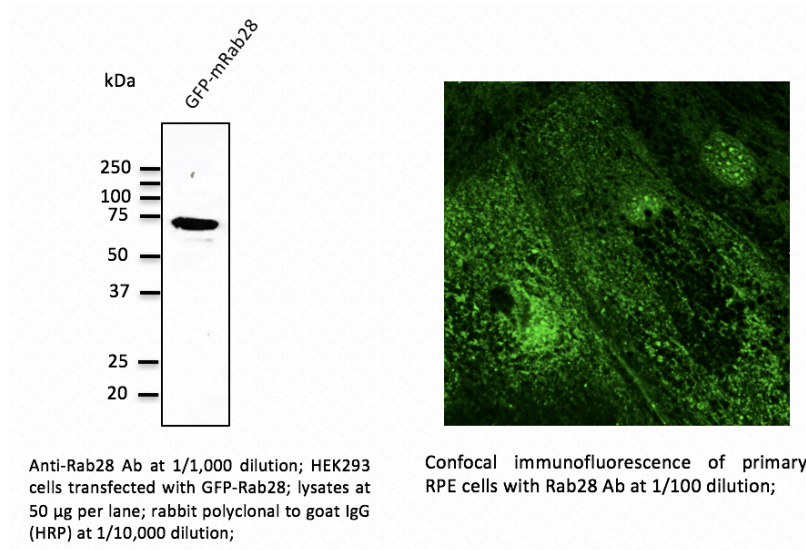
+++ excellent, ++ good, + poor, ND not determined

Usage: Western blot 1:250-1:2,000
 Immunofluorescence 1:25-1:250
 Immunohistochemistry (paraffin) ND
 Immunohistochemistry (frozen) ND

Storage: Store at -20 C for long-term storage. Store at 2-8 C for up to one month.

Special instructions: Avoid freeze/thaw cycles.

References:



For research use only, not for diagnostic use

SICGEN's Proprietary Immunogen Policy

In order to produce high specific antibodies SICGEN has invested a lot of time and effort into selecting immunogen sequences. SICGEN has decided to protect this information by not publishing it on the website. However, these sequences are available on request.