

Catalogue No. AB0058-200

Qty: 600 µg (3 mg/ml)

Syntaxin-6 Polyclonal Antibody

Source: Goat

General description: Goat polyclonal to Syntaxin-6 – trans-Golgi and endosome marker. This trans-Golgi and endosome protein regulates membrane trafficking by partnering with a variety of other SNARE proteins. This protein is also involved in the regulation of neutrophil exocytosis, granule secretion and GLUT4 trafficking.

Alternative names: Syn6 and STX6 antibody.

Form: Polyclonal antibody supplied as a 200 µl (3 mg/ml) aliquot in PBS, 20% glycerol and 0.05%

Reactivity: Reacts against human, rat, mouse, canine and monkey proteins.

sodium azide. This antibody is epitope-affinity purified from goat antiserum.

Immunogen: Recombinant peptide derived from within residues 100 aa to the N-terminus of human STX6 produced in *E. coli*.

Specificity: Detects STX6 by Western blot in transfected cells with GFP-STX6.

Sample	Western blot	Immuno-fluorescence	Histochemistry (paraffin)	Histochemistry (frozen)
human	+++	ND	ND	ND
rat	+++	ND	ND	ND
mouse	+++	ND	ND	ND
canine	+++	ND	ND	ND
monkey	+++	ND	ND	ND

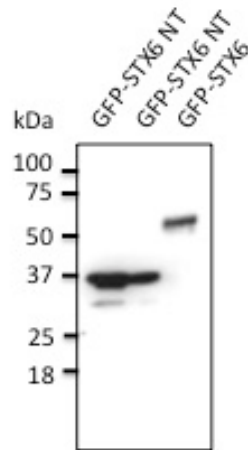
+++ excellent, ++ good, + poor, ND not determined

Usage: Western blot 1:500-1:2,000
 Immunofluorescence ND
 Immunohistochemistry (paraffin) ND
 Immunohistochemistry (frozen) ND

Storage: Store at -20 C for long-term storage. Store at 2-8 C for up to one month.

Special instructions: Avoid freeze/thaw cycles.

References:



Anti-STX6 Ab at 1/500 dilution; lysates at 30 µg per lane; rabbit polyclonal to goat IgG (HRP) at 1/10,000 dilution;

For research use only, not for diagnostic use

SICGEN's Proprietary Immunogen Policy

In order to produce high specific antibodies SICGEN has invested a lot of time and effort into selecting immunogen sequences. SICGEN has decided to protect this information by not publishing it on the website. However, these sequences are available on request.