



Product Data Sheet

001 Rev1 Jan 2012 by JR

Catalogue No. AB0054-200

Qty: 600 µg (3 mg/ml)

ZO1 Polyclonal Antibody

Source: Goat

General description: Goat polyclonal to TJP1 tight junction protein 1 (TJP1). TJP1 is located on a cytoplasmic membrane surface of intercellular tight junctions and may be involved in signal transduction at cell-cell junctions.

Alternative names: ZO-1 and zona occludens protein 1 antibody.

Form: Polyclonal antibody supplied as a 200 µl (3 mg/ml) aliquot in PBS, 20% glycerol and 0.05%

Reactivity: Reacts against human, rat, mouse, canine and monkey proteins.

sodium azide. This antibody is epitope-affinity purified from goat antiserum.

Immunogen: Purified recombinant peptide derived from within residues 1,580 aa to the C-terminus of human ZO1 produced in *E. coli*.

Specificity: Detects endogenous levels of total ZO1 by Western blot in whole cell and tissue lysates.

Sample	Western blot	Immuno-fluorescence	Histochemistry (paraffin)	Histochemistry (frozen)
human	+++	+++	+++	+++
rat	+++	+++	+++	+++
mouse	+++	+++	+++	+++
canine	+++	+++	+++	+++
monkey	+++	+++	+++	+++

+++ excellent, ++ good, + poor, ND not determined

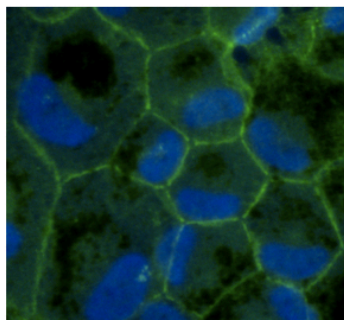
Usage: Western blot 1:500-1:2,000
Immunofluorescence 1:50-1:250
Immunohistochemistry (paraffin) 1:50-1:200
Immunohistochemistry (frozen) 1:50-1:200

Storage: Store at -20 C for long-term storage. Store at 2-8 C for up to one month.

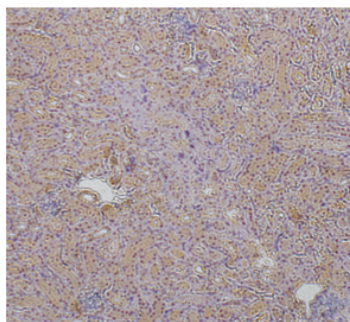
Special instructions: Avoid freeze/thaw cycles.

References:

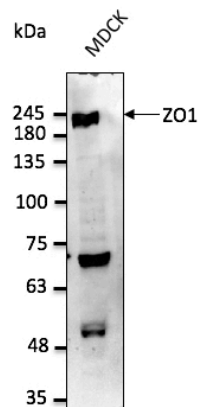
1. Cardoso MHS, PhD Thesis, NOVA University of Lisbon, Portugal 2018
2. Pelkonen L, Sato K, Reinisalo M, et al. *Mol Pharm.* 2017 Mar 6. Supplemental Material. PMID:28112518



Immunofluorescence of primary RPE cells with ZO1 Ab at 1/100 dilution;



Immunoperoxidase of polyclonal antibody to ZO1 (1/200) on paraformaldehyde-fixed paraffin-embedded mouse kidney;



Anti-ZO1 Ab at 1/2,500 dilution; 50 µg of total protein per lane; rabbit polyclonal to goat IgG (HRP) at 1/10,000 dilution;

For research use only, not for diagnostic use

SICGEN's Proprietary Immunogen Policy

In order to produce high specific antibodies SICGEN has invested a lot of time and effort into selecting immunogen sequences. SICGEN has decided to protect this information by not publishing it on the website. However, these sequences are available on request.