

Catalogue No. AB0049-200

Qty: 400 µg (2 mg/ml)

GAPDH Polyclonal Antibody

Source: Goat

General description: Goat polyclonal to GAPDH (glyceraldehyde 3-phosphate dehydrogenase). GAPDH catalyzes an important energy-yielding step in carbohydrate metabolism, the reversible oxidative phosphorylation of glyceraldehyde-3-phosphate in the presence of inorganic phosphate and nicotinamide adenine dinucleotide (NAD). The enzyme exists as a tetramer of identical chains.

Alternative names: glyceraldehyde 3-phosphate dehydrogenase, glyceraldehyde-3-phosphate dehydrogenase, G3PD, GAPD, HGNC:4141, GAPDH antibody.

Form: Polyclonal antibody supplied as a 200 µl (2 mg/ml) aliquot in PBS, 20% glycerol and 0.05%

Reactivity: Reacts against human, rat, mouse, zebrafish, canine and monkey proteins.

sodium azide. This antibody is epitope-affinity purified from goat antiserum.

Immunogen: Purified recombinant peptide derived from within residues 240 aa to the C-terminus of human GAPDH produced in *E. coli*.

Specificity: Detects a band of 37 kDa by Western blot in the following human (293A, HMEC-1, U-118, HaCat), rat (TR-iBRB), mouse (AtT-20, Hepa), canine (D17) and monkey (COS-7) whole cell lysates.

Sample	Western blot	Immuno-fluorescence	Histochemistry (paraffin)	Histochemistry (frozen)
human	+++	+++	+++	+++
rat	+++	+++	+++	+++
mouse	+++	+++	+++	+++
zebrafish	+++	ND	ND	ND
canine	+++	+++	+++	+++
monkey	+++	+++	+++	+++

+++ excellent, ++ good, + poor, ND not determined

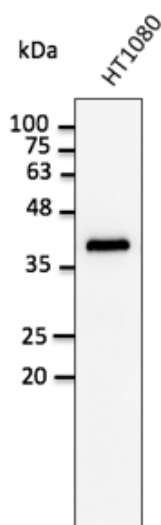
Usage: Western blot 1:500-1:5,000
 Immunofluorescence 1:50-1:250
 Immunohistochemistry (paraffin) 1:200-1:1,000
 Immunohistochemistry (frozen) 1:200-1:1,000

Storage: Store at -20 C for long-term storage. Store at 2-8 C for up to one month.

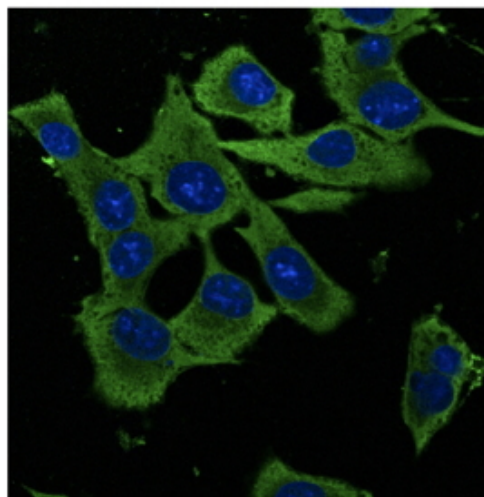
Special instructions: Avoid freeze/thaw cycles.

References:

1. Martins SGR, MSc Thesis, NOVA University of Lisbon, Portugal 2019
2. Ferreira JV, Rosa Soares A, Ramalho JS, et al. *PLoS One* 2019 Oct. PMID:31613922
3. Alenquer M, Vale-Costa S, Etibor TA, et al. *Nat Commun* 2019 Apr. PMID:30967547
4. Sanzà P, Evans RD, Briggs DA, et al. *J Cell Sci* 2019 Apr. PMID:30898842
5. Aires ID, Boia R, Rodrigues-Neves AC, et al. *Glia* 2019 Jan. PMID:30667095
6. Barbeitos JP, MSc Thesis, University of Coimbra, Portugal 2018
7. Alenquer M, Vale-Costa S, Sousa AL, et al. *bioRxiv* 410373; Sept 2018
8. Alzahofi N, Robinson CL, Welz T, et al. *bioRxiv* 314153; May 2018
9. Ribeiro ST, Tesio M, Ribot JC, et al. *Leukemia* 2017 Jul. PMID:27899804
10. Santarino IB, Viegas MS, Domingues NS, et al. *Sci Rep* 2017 Jul. PMID:28724916
11. Ribeiro STF, PhD Thesis, University of Lisbon, Portugal 2017
12. Robinson CL, Evans RD, Briggs DA, et al. *J Cell Sci* 2017 May. PMID:28490438
13. Ramalho AR, Toscano A, Pereira P, et al. *Rev Port Cardiol* 2017 May. PMID:28479269
14. Vale-Costa S, Alenquer M, Sousa AL, et al. *J Cell Sci*. 2016 Mar. PMID:26940915
15. Encarnação M, Espada L, Escrevente C, et al. *J Cell Biol* 2016 Jun 20. PMID: 27325790
16. Ferreira JV, Soares AR, Ramalho JS, et al. *Scientific Reports* 2015 May. PMID:25958982
17. Ferreira RRS, MSc Thesis, University of Coimbra, Portugal 2015
18. Paiva RA, MSc Thesis, University of Coimbra, Portugal 2015
19. Casalou C, Seixas C, Portelinha A, et al. *J Cell Sci* 2014 Jun. PMID:24777479
20. Ribeiro-Rodrigues TM, Catarino S, Marques C, et al. *FASEB J* 2014 Nov. PMID:25070368
21. Moreiras HAF, MSc Thesis, University of Lisbon, Portugal 2014



Anti-GAPDH Ab at 1/2,500 dilution; lysates at 50 µg per lane; Rabbit polyclonal to goat IgG (HRP) at 1/10,000 dilution;



Immunofluorescence – anti-GAPDH Ab in Hepa1-6 cells at 1/50 dilution; cells were fixed with methanol;



Product Data Sheet

001 Rev1 Jan 2012 by JR

For research use only, not for diagnostic use

SICGEN's Proprietary Immunogen Policy

In order to produce high specific antibodies SICGEN has invested a lot of time and effort into selecting immunogen sequences. SICGEN has decided to protect this information by not publishing it on the website. However, these sequences are available on request.