

Catalogue No. AB0049-200

Qty: 400 µg (2 mg/ml)

GAPDH Polyclonal Antibody

Source: Goat

General description: Goat polyclonal to GAPDH (glyceraldehyde 3-phosphate dehydrogenase). GAPDH catalyzes an important energy-yielding step in carbohydrate metabolism, the reversible oxidative phosphorylation of glyceraldehyde-3-phosphate in the presence of inorganic phosphate and nicotinamide adenine dinucleotide (NAD). The enzyme exists as a tetramer of identical chains.

Alternative names: glyceraldehyde 3-phosphate dehydrogenase, glyceraldehyde-3-phosphate dehydrogenase, G3PD, GAPD, HGNC:4141, GAPDH antibody.

Form: Polyclonal antibody supplied as a 200 µl (2 mg/ml) aliquot in PBS, 20% glycerol and 0.05%

Reactivity: Reacts against human, rat, mouse, zebrafish, canine and monkey proteins.

sodium azide. This antibody is epitope-affinity purified from goat antiserum.

Immunogen: Purified recombinant peptide derived from within residues 240 aa to the C-terminus of human GAPDH produced in *E. coli*.

Specificity: Detects a band of 37 kDa by Western blot in the following human (293A, HMEC-1, U-118, HaCat), rat (TR-iBRB), mouse (AtT-20, Hepa), canine (D17) and monkey (COS-7) whole cell lysates.

Sample	Western blot	Immuno-fluorescence	Histochemistry (paraffin)	Histochemistry (frozen)
human	+++	+++	+++	+++
rat	+++	+++	+++	+++
mouse	+++	+++	+++	+++
zebrafish	+++	ND	ND	ND
canine	+++	+++	+++	+++
monkey	+++	+++	+++	+++

+++ excellent, ++ good, + poor, ND not determined

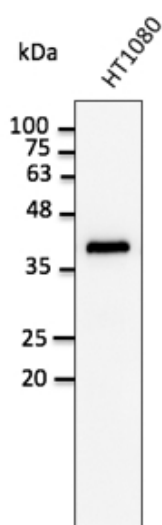
Usage: Western blot 1:500-1:5,000
 Immunofluorescence 1:50-1:250
 Immunohistochemistry (paraffin) 1:200-1:1,000
 Immunohistochemistry (frozen) 1:200-1:1,000

Storage: Store at -20 C for long-term storage. Store at 2-8 C for up to one month.

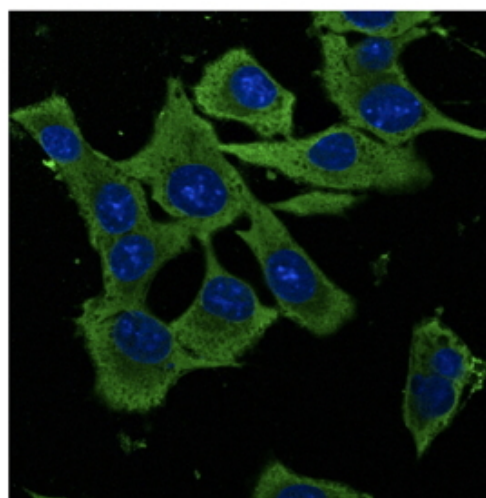
Special instructions: Avoid freeze/thaw cycles.

References:

1. Aires ID, Boia R, Rodrigues-Neves AC, et al. *Glia*. 2019 Jan. PMID:30667095
2. Alenquer M, Vale-Costa S, Sousa AL, et al. *bioRxiv* 410373; Sept 2018.
3. Alzahofi N, Robinson CL, Welz T, et al. *bioRxiv* 314153; May 2018.
4. Ribeiro ST, Tesio M, Ribot JC, et al. *Leukemia*. 2017 Jul. PMID:27899804
5. Santarino IB, Viegas MS, Domingues NS, et al. *Sci Rep*. 2017 Jul. PMID:28724916
6. Ribeiro STF, PhD Thesis, University of Lisbon, Portugal 2017
7. Robinson CL, Evans RD, Briggs DA, et al. *J Cell Sci*. 2017 May 10. PMID:28490438
8. Ramalho AR, Toscano A, Pereira P, et al. *Rev Port Cardiol*. 2017 May. PMID:28479269
9. Vale-Costa S, Alenquer M, Sousa AL, et al. *J Cell Sci*. 2016 Mar. PMID:26940915
10. Encarnação M, Espada L, Escrevente C, et al. *J Cell Biol*. 2016 Jun 20. PMID: 27325790
11. Ferreira JV, Soares AR, Ramalho JS, et al. *Scientific Reports*. 2015 May. PMID:25958982
12. Ferreira RRS, MSc Thesis, University of Coimbra, Portugal 2015
13. Paiva RA, MSc Thesis, University of Coimbra, Portugal 2015
14. Casalou C, Seixas C, Portelinha A, et al. *J Cell Sci*. 2014 Jun. PMID:24777479
15. Ribeiro-Rodrigues TM, Catarino S, Marques C, et al. *FASEB J*. 2014 Nov. PMID:25070368
16. Moreiras HAF, MSc Thesis, University of Lisbon, Portugal 2014



Anti-GAPDH Ab at 1/2,500 dilution; lysates at 50 µg per lane; Rabbit polyclonal to goat IgG (HRP) at 1/10,000 dilution;



Immunofluorescence – anti-GAPDH Ab in Hepa1-6 cells at 1/50 dilution; cells were fixed with methanol;

For research use only, not for diagnostic use

SICGEN's Proprietary Immunogen Policy

In order to produce high specific antibodies SICGEN has invested a lot of time and effort into selecting immunogen sequences. SICGEN has decided to protect this information by not publishing it on the website. However, these sequences are available on request.