

**Catalogue No.** AB0046-200

**Qty:** 400 µg (2 mg/ml)

## Tubulin-4A Alpha Chain Polyclonal Antibody

**Source:** Goat

**General description:** Goat polyclonal antibody to alpha tubulin. Microtubules of the eukaryotic cytoskeleton perform essential and diverse functions and are composed of a heterodimer of alpha and beta tubulin. The alpha and beta tubulins represent the major components of microtubules, while gamma tubulin plays a critical role in the nucleation of microtubule assembly.

**Alternative names:** TUBA1, TUBA4A antibody.

**Form:** Polyclonal antibody supplied as a 200 µl (2 mg/ml) aliquot in PBS, 20% glycerol and 0.05% sodium azide. This antibody is epitope-affinity

**Reactivity:** Reacts against human, rat, mouse, monkey and canine proteins.

purified from goat antiserum. This antibody is identical to AB00046.

**Immunogen:** Purified recombinant peptide derived from within residues 400 aa to the C-terminus of human alpha tubulin produced in *E. coli*

**Specificity:** This antibody gives a positive signal in the following human (293A, HMEC-1, U-118, HaCat), rat (TR-iBRB), mouse (AtT-20, Hepa), canine (D17) and monkey (COS-7) whole cell lysates.

Sample	Western blot	Immuno-fluorescence	Histochemistry (paraffin)	Histochemistry (frozen)
human	+++	+++	ND	ND
rat	+++	+++	ND	ND
mouse	+++	+++	ND	ND
canine	+++	+++	ND	ND
monkey	+++	+++	ND	ND

+++ excellent, ++ good, + poor, ND not determined

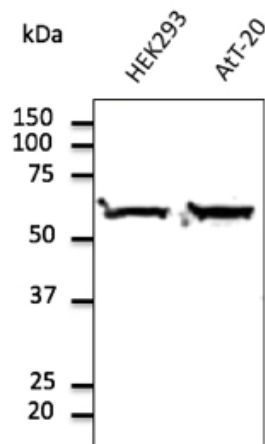
**Usage:** Western blot 1:250-1:2,000  
 Immunofluorescence 1:50-1:200  
 Immunohistochemistry (paraffin) ND  
 Immunohistochemistry (frozen) ND

**Storage:** Store at -20 C for long-term storage. Store at 2-8 C for up to one month.

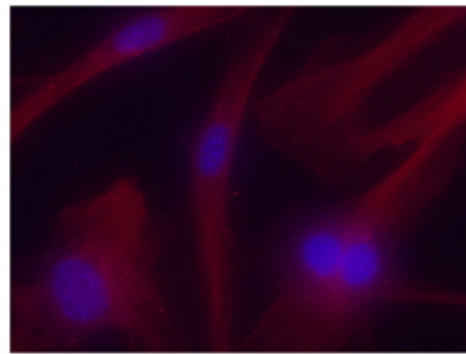
**Special instructions:** Avoid freeze/thaw cycles.

## References:

1. Ferreira JV, Rosa Soares A, Ramalho JS, et al. *PLoS One*. 2019 Oct. PMID:31613922
2. Goncalves SMM, PhD Thesis, University of Minho - Portugal 2015



Anti-Tubulin alpha4A Ab at 1/1,000 dilution; lysates at 100 µg per lane; Rabbit polyclonal to goat IgG (HRP) at 1/10,000 dilution;



Immunofluorescence – anti-Tubulin alpha4A Ab - Microtubule Marker in mouse embryonic fibroblasts at 1/50 dilution;

For research use only, not for diagnostic use

### SICGEN's Proprietary Immunogen Policy

In order to produce high specific antibodies SICGEN has invested a lot of time and effort into selecting immunogen sequences. SICGEN has decided to protect this information by not publishing it on the website. However, these sequences are available on request.