

Catalogue No. AB0043-500

Qty: 1.5 mg (3 mg/ml)

Cathepsin D Polyclonal Antibody

Source: Goat

General description: Goat polyclonal antibody to Cathepsin D. Cathepsin D is a lysosomal aspartic protease of the pepsin family. Acid protease active in intracellular protein breakdown. It is composed of a dimer of disulphide-linked heavy and light chains, both produced from a single protein precursor. It is involved in the pathogenesis of several diseases such as breast cancer and possibly Alzheimer disease.

Alternative names: ceroid-lipofuscinosis, CLN10; CPSD, CTSD, lysosomal aspartyl protease, lysosomal aspartyl peptidase, neuronal 10 antibody.

Form: Polyclonal antibody supplied as a 500 µl (3 mg/ml) aliquot in PBS, 20% glycerol and 0.05%

Reactivity: Reacts against human, rat, mouse, canine and monkey proteins.

sodium azide. This antibody is epitope-affinity purified from goat antiserum.

Immunogen: Purified recombinant peptide derived from within residues 275 aa to the C-terminus of human Cathepsin D produced in *E. coli*.

Specificity: This antibody gives a positive signal in the following human (Jurkat, HT1080, HUH, MDA-MB-231, ARPE19, SH-SY5Y), canine (MDCK) and monkey (COS-7) whole cell lysates.

Sample	Western blot	Immuno-fluorescence	Histochemistry (paraffin)	Histochemistry (frozen)	IEM
human	+++	+++	+++	+++	+++
rat	+++	+++	+++	+++	+++
mouse	+++	+++	+++	+++	+++
canine	+++	+++	+++	+++	+++
monkey	+++	+++	+++	+++	+++

+++ excellent, ++ good, + poor, ND not determined

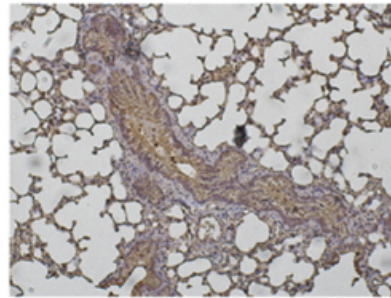
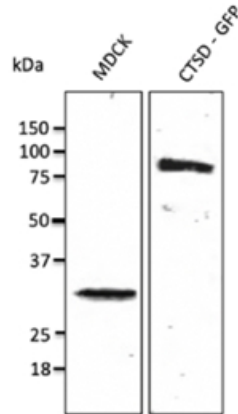
Usage: Western blot 1:250-1:1,000
 Immunofluorescence 1:50-1:200
 Immunohistochemistry (paraffin) 1:50-1:200
 Immunohistochemistry (frozen) 1:50-1:200
 IEM 1:50-1:200

Storage: Store at -20 C for long term storage. Store at 2-8 C for up to one month.

Special instructions: Avoid freeze/thaw cycles.

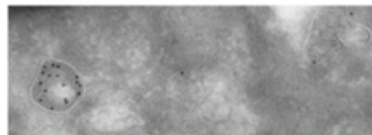
References:

1. Romagnoli M, Bresson L, Di-Cicco A, et al. *Development* 2020 Jan. PMID:31988184
2. Pelkonen L, Sato K, Reinisalo M, et al. *Mol Pharm* 2017 Mar. PMID:28112518

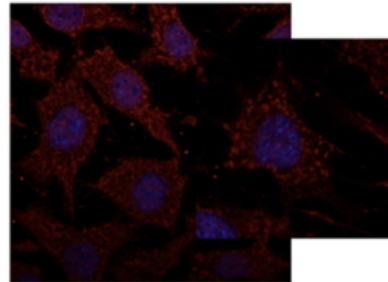


Immunoperoxidase of polyclonal antibody to CTSD (1/200) on paraformaldehyde-fixed paraffin-embedded mouse lung;

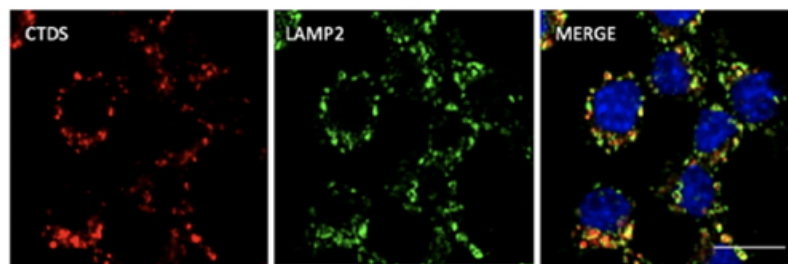
Anti-CTSD Ab at 1/500 dilution; endogenous CTSD (100 µg per lane) and transfected 293FT cell lysate (at 30 µg per lane); rabbit polyclonal to goat IgG (HRP) at 1/10,000 dilution;



Immunogold labeling using melanocytes and anti-CTSD Ab;



Immunofluorescence – anti-CTSD Ab at 1/100 dilution in NHI/3T3 cells; cells were fixed with methanol and permeabilized with 0.1% saponin;



Immunofluorescence – anti-CTSD Ab at 1/100 dilution in RAW264.7 cells; cells were fixed with PFA and permeabilized with 0.05% saponin;

For research use only, not for diagnostic use

SICGEN's Proprietary Immunogen Policy



Product Data Sheet

001 Rev1 Jan 2012 by JR

In order to produce high specific antibodies SICGEN has invested a lot of time and effort into selecting immunogen sequences. SICGEN has decided to protect this information by not publishing it on the website. However, these sequences are available on request.