

Catalogue No. AB0042-200

Qty: 400 µg (2 mg/ml)

UIS4 Polyclonal Antibody

Source: Goat

sodium azide. This antibody is epitope-affinity purified from goat antiserum.

General description: Goat polyclonal antibody to UIS4. UIS4 protein is expressed throughout liver stage development and localizes to the parasite vacuole (parasitophorous vacuole membrane).

Immunogen: Purified recombinant peptide derived from within residues 80 aa to the C-terminus of UIS4 produced in *E. coli*.

Alternative names:
Specificity: Detects UIS4 in *Plasmodium berghei*
Form: Polyclonal antibody supplied as a 200 µl (2 mg/ml) aliquot in PBS, 20% glycerol and 0.05%

Reactivity: *Plasmodium berghei*

Sample	Western blot	Immuno-fluorescence	Histochemistry (paraffin)	Histochemistry (frozen)
<i>Plasmodium berghei</i>	ND	+++	ND	ND

+++ excellent, ++ good, + poor, ND not determined

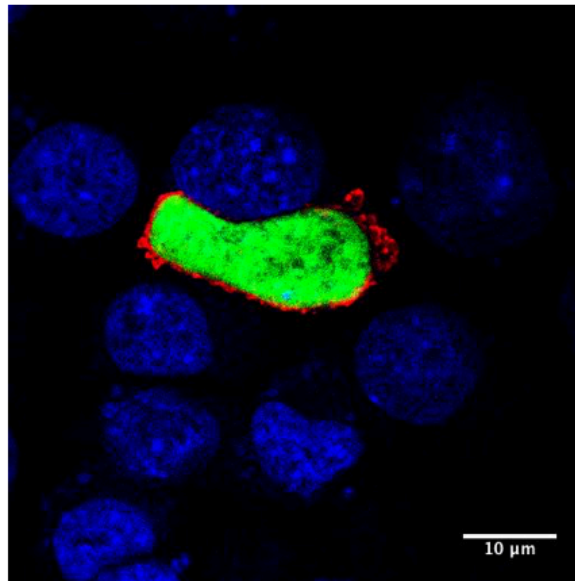
Usage: Western blot ND
Immunofluorescence 1:250-1:1,000
Immunohistochemistry (paraffin) ND
Immunohistochemistry (frozen) ND

Storage: Store at -20 C for long-term storage. Store at 2-8 C for up to one month

Special instructions: Avoid freeze/thaw cycles

References:

1. Real E, Rodrigues L, Cabal GG, et al. *Nat Microbiol.* 2017 Nov. PMID:29109477
2. Zuzarte-Luís V, Mello-Vieira J, Marreiros IM, et al. *Nat Microbiol.* 2017 Sep. PMID:28947801
3. Santos JM, Egarter S, Zuzarte-Luís V, et al. *Elife.* 2017 May. PMID:28525314
4. Manzoni G, Marinach C, Topçu S, et al. *Elife.* 2017 May. PMID:28506360
5. Silva PA, Guerreiro A, Santos JM. *PLoS One.* 2016 Jan. PMID:26808677
6. Risco-Castillo V, Topcu S, Marinach C, et al. *Cell Host & Microbe* 2015. PMID:26607162
7. Thieleke-Matos C, Lopes da Silva M, Cabrita-Santos L, et al. *Cellular Microbiology* 2015 Sep. PMID:26399761
8. Thieleke-Matos C, Lopes da Silva M, Cabrita-Santos L, et al. *Traffic* 2014 Oct. PMID:24992508



UIS4 liver section: 50 μ M liver sections of a B6 mice infected with *Plasmodium Berghei* ANKA parasites (44 hours post infection), stained with anti-UIS4 (1:500 in red) followed by Alexa anti goat 568 (1:400) and nuclei (blue).

For research use only, not for diagnostic use

SICGEN's Proprietary Immunogen Policy

In order to produce high specific antibodies SICGEN has invested a lot of time and effort into selecting immunogen sequences. SICGEN has decided to protect this information by not publishing it on the website. However, these sequences are available on request.