

Catalogue No. AB0041-200*

Qty: 400 µg (2 mg/ml)

Calnexin Polyclonal Antibody*

Source: Goat

General description: Goat polyclonal to CANX (Calnexin) - endoplasmic reticulum (ER) membrane marker. CANX is a member of the calnexin family of molecular chaperones. This protein is a calcium-binding, ER-associated protein that interacts transiently with newly synthesized N-linked glycoproteins, facilitating protein folding and assembly. It may also play a central role in the quality control of protein folding by retaining incorrectly folded protein subunits within the ER for degradation.

Alternative names: Calnexin, CALX, CNX, FLJ26570, histocompatibility complex class I antigen binding protein p88, IP90, major histocompatibility complex class I antigen-binding protein p88, MS952, P90 antibody.

Form: Polyclonal antibody supplied as a 200 µl (2 mg/ml) aliquot in PBS, 20% glycerol and 0.05% sodium azide. This antibody is epitope-affinity purified from goat antiserum and it is identical to AB4100-200.

Immunogen: Purified recombinant peptide within residues 550 aa to the C-terminus of human CANX produced in *E. coli*.

Specificity: Detects a band of 90 kDa by Western blot in the following human (293A, primary fibroblasts, HaCat, HeLa, HMEC-1, Jurkat, MNT1, U-118, rat (TR-iBRB), mouse (3T3, AtT-20, Hepa, Raw264.7), monkey (COS-7) and canine (D17) whole cell lysates.

Reactivity: Reacts against human, rat, mouse, canine and monkey proteins.

Sample	Western blot	Immuno-fluorescence	Histochemistry (paraffin)	Histochemistry (frozen)
human	+++	+++	+++	+++
rat	+++	+++	+++	+++
mouse	+++	+++	+++	+++
canine	+++	+++	+++	+++
monkey	+++	+++	+++	+++

+++ excellent, ++ good, + poor, ND not determined

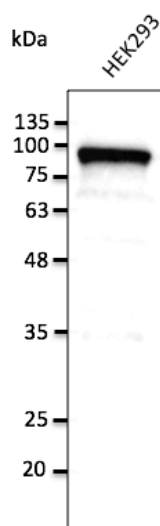
Usage: Western blot 1:500-1:5,000
 Immunofluorescence 1:50-1:500
 Immunohistochemistry (paraffin) 1:200-1:1,000
 Immunohistochemistry (frozen) 1:200-1:1,000

Storage: Store at -20 C for long-term storage. Store at 2-8 C for up to one month.

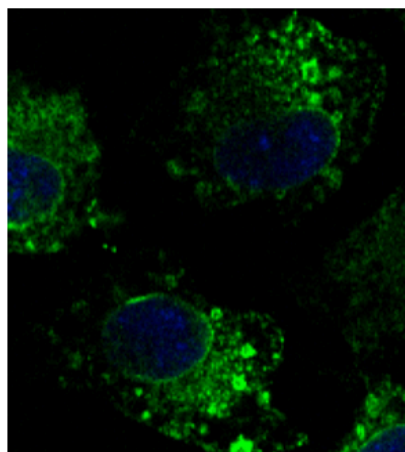
Special instructions: Avoid freeze/thaw cycles.

References:

1. Pelkonen L, Sato K, Reinisalo M, et al. *Mol Pharm.* 2017 Mar 6. PMID:28112518
2. Martins-Marques T, Pinho MJ, Zuzarte M. et al. *J Extracell Vesicles.* 2016 Sep 29;5:32538. PMID:27702427
3. Ferreira RRS, MSc Thesis, Coimbra University 2015
4. Paiva RA, MSc Thesis, Coimbra University 2015
5. Samtleben S, PhD Thesis, Universität Würzburg 2014
6. Ribot JC, Ribeiro ST, Correia DV, Sousa AE, Silva-Santos B. *J Immunol.* 2014 Mar, PMID: 24489097
7. Marques, CIR, MSc Thesis, Coimbra University 2013



Anti-Calnexin Ab at 1/2,500 dilution; lysates at 50 µg per lane; rabbit polyclonal to goat IgG (HRP) at 1/10,000 dilution;



Immunofluorescence – anti-CANX Ab in Hepa1-6 cells at 1/100 dilution; cells were fixed with 4% of PFA;

For research use only, not for diagnostic use

SICGEN's Proprietary Immunogen Policy

In order to produce high specific antibodies SICGEN has invested a lot of time and effort into selecting immunogen sequences. SICGEN has decided to protect this information by not publishing it on the website. However, these sequences are available on request.

*This antibody is identical to AB4100.