

Catalogue No. AB0040-200

Qty: 600 µg (3 mg/ml)

mCherry Polyclonal Antibody

Source: Goat

General description: Goat polyclonal antibody to mCherry (Cherry fluorescent protein).

Alternative names: Cherry fluorescent protein; dsRed, red fluorescent protein, tdTomato antibody.

Form: Polyclonal antibody supplied as a 200 µl (3 mg/ml) aliquot in PBS, 20% glycerol and 0.05% sodium azide. This antibody is epitope-affinity purified from goat antiserum.

Immunogen: Purified recombinant peptide produced in *E. coli*.

Specificity: In 293HEK cells transfected with cds plasmid detects a band of 29 kDa by Western blot. This antibody recognizes very well tdTomato and does not recognize GFP (green fluorescent protein).

Reactivity: Red Fluorescent Protein (dsRed), tdTomato and mCherry.

Sample	Western blot	Immuno-fluorescence	Histochemistry (paraffin)	Histochemistry (frozen)
Transfected cells	+++	+++	+++	+++

+++ excellent, ++ good, + poor, ND not determined

Usage: Western blot	1:500-1:5,000
Immunofluorescence	1:50-1:500
Immunohistochemistry (paraffin)	1:50-1:500
Immunohistochemistry (frozen)	1:50-1:500

Storage: Store at -20 C for long-term storage. Store at 2-8 C for up to one month.

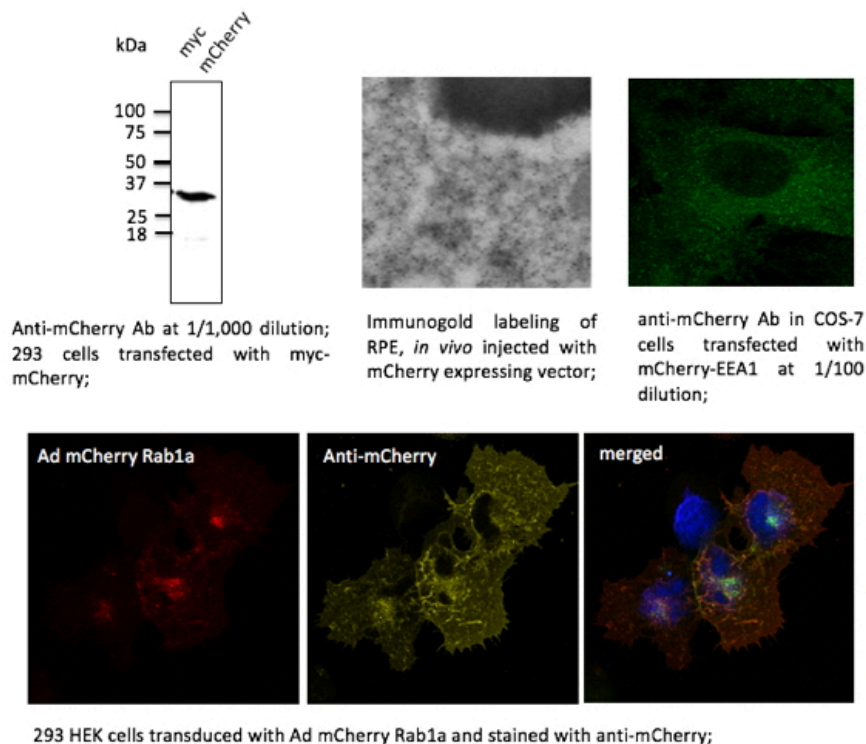
Special instructions: Avoid freeze/thaw cycles.

References:

1. Miesfeld JB, Glaser T, Brown NL. *Gene Expr Patterns*. 2017 Dec. PMID:29225067
2. Oliveira CR, Lemaitre R, Tazaki A, et al. *Dev Biol*. 2017 Oct. PMID:29198566
3. Lin B, Coleman JH, Peterson JN, et al. *Cell Stem Cell*. 2017 Nov. PMID:29174332
4. Rocca CJ, Goodman SM, Dulin JN, et al. *Sci Transl Med*. 2017 Oct. PMID:29070698
5. Kodani S, Soya S, Sakurai T. *J Neurosci*. 2017 Jun. PMID:28642284
6. Saito M, Otsu W, Hsu KS, et al. *EMBO Rep*. 2017 Jun. PMID:28607034
7. Castellano JM, Mosher KI, Abbey RJ, et al. *Nature*. 2017 Apr. PMID:28424512
8. Shevelkin AV, Terrillion CE, Abazyan BN, et al. *Neurobiol Dis*. 2017 Apr. PMID:28392471
9. Agarwal A, Wu PH, Hughes EG, et al. *Neuron*. 2017. PMID:28132831
10. Abaira VE, Kuehn ED, Chirila AM, et al. *Cell*. 2017 Jan. PMID:28041852

References (cont.)

11. Krishnamurthy VV, Khamo JS, Mei W, et al. *Development*. 2016 Nov. PMID:27697903
12. Falkner S, Grade S, Dimou L, et al. *Nature*. 2016 Oct 26. PMID:27783592
13. Vyas P, Wu JS, Zimmerman A, et al. *J. Assoc. Res. Otolaryngol.* 2016 Sep. PMID:27696081
14. Sargiannidou I, Kim GH, Kyriakoudi S, et al. *Neurogenetics*. 2015 Jul. PMID:25771809
15. Merienne N, Delzor A, Viret A, et al. *Gene Ther.* 2015 Oct. PMID:26109254



For research use only, not for diagnostic use

SICGEN's Proprietary Immunogen Policy

In order to produce high specific antibodies SICGEN has invested a lot of time and effort into selecting immunogen sequences. SICGEN has decided to protect this information by not publishing it on the website. However, these sequences are available on request.