

Catalogue No. AB0020-500

Qty: 1 mg (2 mg/ml)

GFP Polyclonal Antibody

Source: Goat

General description: Goat polyclonal antibody to GFP (green fluorescent protein).

Alternative names: Green fluorescent protein antibody.

Form: Polyclonal antibody supplied as a 500 µl (2 mg/ml) aliquot in PBS, 20% glycerol and 0.05% sodium azide. This antibody is epitope-affinity purified from goat antiserum.

Immunogen: Purified recombinant peptide produced in *E. coli*.

Specificity: In 293HEK cells transfected with cds plasmid detects a band of 27 kDa by Western blot. This antibody does recognize YFP and CFP and does not recognize RFP and mCherry fluorescent proteins.

Reactivity:

| Sample | Western blot | Immuno-fluorescence | Histochemistry (paraffin) | Histochemistry (frozen) |
|-------------------|--------------|---------------------|---------------------------|-------------------------|
| Transfected cells | +++ | +++ | +++ | +++ |

+++ excellent, ++ good, + poor, ND not determined

| | |
|---------------------------------|---------------|
| Usage: Western blot | 1:500-1:5,000 |
| Immunofluorescence | 1:50-1:1,000 |
| Immunohistochemistry (paraffin) | 1:50-1:1,000 |
| Immunohistochemistry (frozen) | 1:50-1:1,000 |

Storage: Store at -20 C for long-term storage. Store at 2-8 C for up to one month.

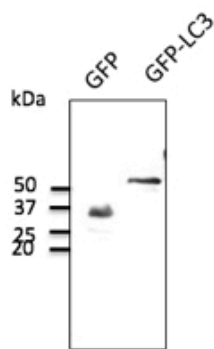
Special instructions: Avoid freeze/thaw cycles.

References:

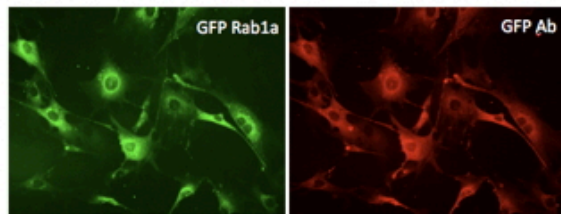
- Ramos-Nascimento A, Kellen B, Ferreira F, et al. *J Cell Sci*. 2017 Dec. PMID:29061883
- Wu JS, Vyas P, Glowatzki E, et al. *J Comp Neurol*. 2017 Oct. PMID:29055051
- Agarwal A, Wu PH, Hughes EG, et al. *Neuron*. 2017. PMID:28132831
- Mimura Y, Takagi M, Clever M, et al. *J Cell Sci*. 2016 Nov. PMID:27802161
- Vyas P, Wu JS, Zimmerman A, et al. *J Assoc Res Otolaryngol*. 2016 Sep. PMID:27696081
- Vale-Costa S, Alenquer M, Sousa AL, et al. *J Cell Sci*. 2016 Mar. PMID:26940915
- Martins-Marques T, Anjo SI, Pereira P, et al. *Mol Cell Proteomics*. 2015 Aug. PMID:26316108
Supplemental Information
- Sargiannidou I, Kim GH, Kyriakoudi S, et al. *Neurogenetics*. 2015 Jul. PMID: 25771809
- Kourti M, Ikonomidou G, Giakoumakis NN, et al. *Cell Signal*. 2015 Mar. PMID: 25744540

References (cont.)

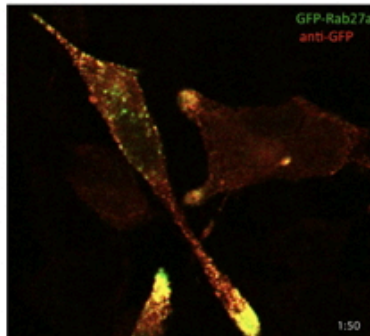
10. Paukert M, Agarwal A, Cha J, et al. *Neuron*. 2014 Jun. PMID: 24945771 Supplemental Information
11. Pais SV, Milho C, Almeida F, et al. *PLoS One*. 2013. PMID: 23431368



Anti-GFP Ab at 1/1,000 dilution; HEK293 transfected cell lysates at 50 µg per lane; rabbit polyclonal to goat IgG (HRP) at 1/10,000 dilution;



Primary fibroblasts transduced with Ad GFP-Rab1a and immunostained with with GFP Ab;



AtT-20 transfected with GFP-Rab27a and immunostained with with GFP Ab;

For research use only, not for diagnostic use

SICGEN's Proprietary Immunogen Policy

In order to produce high specific antibodies SICGEN has invested a lot of time and effort into selecting immunogen sequences. SICGEN has decided to protect this information by not publishing it on the website. However, these sequences are available on request.