

Catalogue No. AB0016-200*

Qty: 800 µg (4 mg/ml)

Connexin 43 Polyclonal Antibody*

Source: Goat

General description: Goat polyclonal to connexin 43, which is a member of the connexin family. Cx43 is a component of gap junctions, which are composed of arrays of intercellular channels that provide a route for the diffusion of low molecular weight materials from cell to cell. This protein is the major protein of gap junctions in embryonic development and in the heart that are thought to have a crucial role in the synchronized contraction of the heart.

Alternative names: AVSD3, CX43, DFNB38, gap junction protein, alpha 1, 43kDa, GJA1, GJAL HSS, HLHS1, ODDD antibody.

Form: Polyclonal antibody supplied as a 200 µl (4 mg/ml) aliquot in PBS, 20% glycerol and 0.05% sodium azide. This antibody is epitope-affinity purified from goat antiserum and it is identical to AB1600.

Immunogen: Purified recombinant peptide derived from within residues 230 aa to the C-terminus of rat CX43 produced in *E. coli*.

Specificity: Detects endogenous levels of total connexin 43.

Reactivity: Reacts against human, rat, mouse, canine and monkey proteins.

Sample	Western blot	Immuno-fluorescence	Histochemistry (paraffin)	Histochemistry (frozen)
human	+++	+++	+++	+++
rat	+++	+++	+++	+++
mouse	+++	+++	+++	+++
canine	+++	+++	+++	+++
monkey	+++	+++	+++	+++

+++ excellent, ++ good, + poor, ND not determined

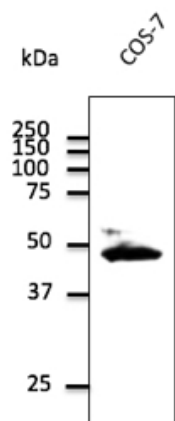
Usage: Western blot 1:500-1:2,000
 Immunofluorescence 1:50-1:250
 Immunohistochemistry (paraffin) 1:250-1:800
 Immunohistochemistry (frozen) 1:250-1:800

Storage: Store at -20 C for long-term storage. Store at 2-8 C for up to one month.

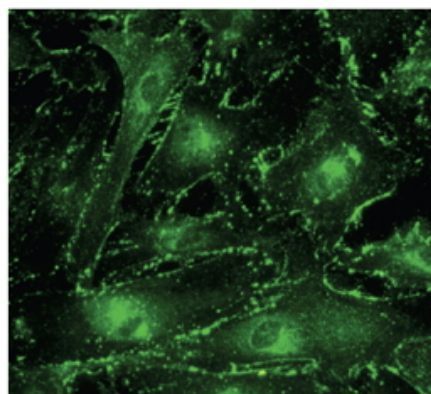
Special instructions: Avoid freeze/thaw cycles.

References:

1. Catarino S, Ribeiro-Rodrigues TM, Sa Ferreira R, et al. *Cells*. 2020 Apr. PMID: 32272685
2. Wang W, Ye S, Zhang L, et al. *BMC Cardiovasc Disord* 2020. PMID:32066388
3. Barbeitos JP, MSc Thesis, University of Coimbra, Portugal 2018
4. Martins-Marques T, Pinho MJ, Zuzarte M. et al. *J Extracell Vesicles*. 2016 Sep. PMID:27702427
5. Paiva RA, MSc Thesis, University of Coimbra, Portugal 2015
6. Ferreira RRS, MSc Thesis, University of Coimbra, Portugal 2015
7. Martins-Marques T, Anjo SI, Pereira P, et al. *Mol Cell Proteomics* 2015 Aug 27. PMID:26316108 Supplemental Information
8. Ribeiro-Rodrigues TM, Catarino S, Marques C, et al. *FASEB J* 2014 Nov. PMID:25070368



Endogenous CX43 detected at 1/1,000 dilution; lysate at 100 µg per lane and rabbit polyclonal to goat IgG (HRP) at 1/10,000 dilution;



Immunostaining of primary RPE cells with CX43 Ab at 1/100 dilution;

For research use only, not for diagnostic use

SICGEN's Proprietary Immunogen Policy

In order to produce high specific antibodies SICGEN has invested a lot of time and effort into selecting immunogen sequences. SICGEN has decided to protect this information by not publishing it on the website. However, these sequences are available on request.

* This antibody is identical to AB1600.