

**Catalogue No.** AB0009-200

**Qty:** 800 µg (4 mg/ml)

## Rab5a Polyclonal Antibody

**Source:** Goat

**General description:** Goat polyclonal antibody to mouse Rab5a. Rab5a belongs to the small GTPase superfamily, Rab family. Rab5a is an Early Endosome Marker and functions as a key regulator of vesicular trafficking during early endocytosis.

**Alternative names:** RAB5A, RAS-associated protein RAB5A, ras-related protein Rab-5A antibody.

**Form:** Polyclonal antibody supplied as a 200 µl (4 mg/ml) aliquot in PBS, 20% glycerol and 0.05%

sodium azide. This antibody is epitope-affinity purified from goat antiserum.

**Immunogen:** Purified recombinant peptide derived from within residues 115 aa to the C-terminus of mouse Rab5a produced in *E. coli*.

**Specificity:** Detects Rab5a protein by Western blot in cell lysates of transfected cells with GFP-Rab5a. This Ab is specific for Rab5a; it does not recognize Rab5b and Rab5c.

**Reactivity:** Reacts against human, rat, mouse, canine and monkey proteins.

Sample	Western blot	Immuno-fluorescence	Histochemistry (paraffin)	Histochemistry (frozen)
human	+++	+++	ND	ND
rat	+++	+++	ND	ND
mouse	+++	+++	ND	ND
canine	+++	+++	ND	ND
monkey	+++	+++	ND	ND

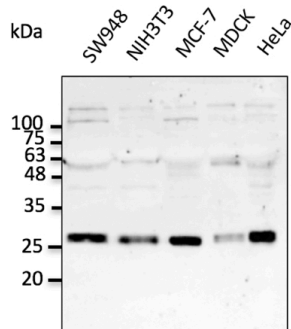
+++ excellent, ++ good, + poor, ND not determined

**Usage:** Western blot 1:250-1:5,000  
 Immunofluorescence 1:50-1:250  
 Immunohistochemistry (paraffin) ND  
 Immunohistochemistry (frozen) ND

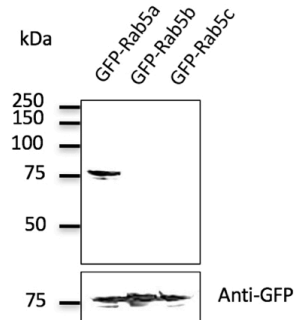
**Storage:** Store at -20 C for long-term storage. Store at 2-8 C for up to one month.

**Special instructions:** Avoid freeze/thaw cycles.

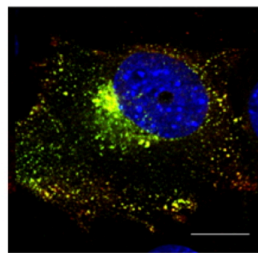
### References:



Anti-Rab5a Ab at 1/2,500 dilution; lysates at 50 µg per lane; rabbit polyclonal to goat IgG (HRP) at 1/10,000 dilution;



Anti-Rab5a Ab at 1/500 dilution; 293 cells transfected with GFP-Rab5; rabbit polyclonal to goat IgG (HRP) at 1/10,000 dilution;



Immunofluorescence – anti-Rab5a Ab in transduced Hepa1-6 cells with Ad GFP-Rab5a at 1/50 dilution; cells were fixed with 4% of PFA;

For research use only, not for diagnostic use

### SICGEN's Proprietary Immunogen Policy

In order to produce high specific antibodies SICGEN has invested a lot of time and effort into selecting immunogen sequences. SICGEN has decided to protect this information by not publishing it on the website. However, these sequences are available on request.